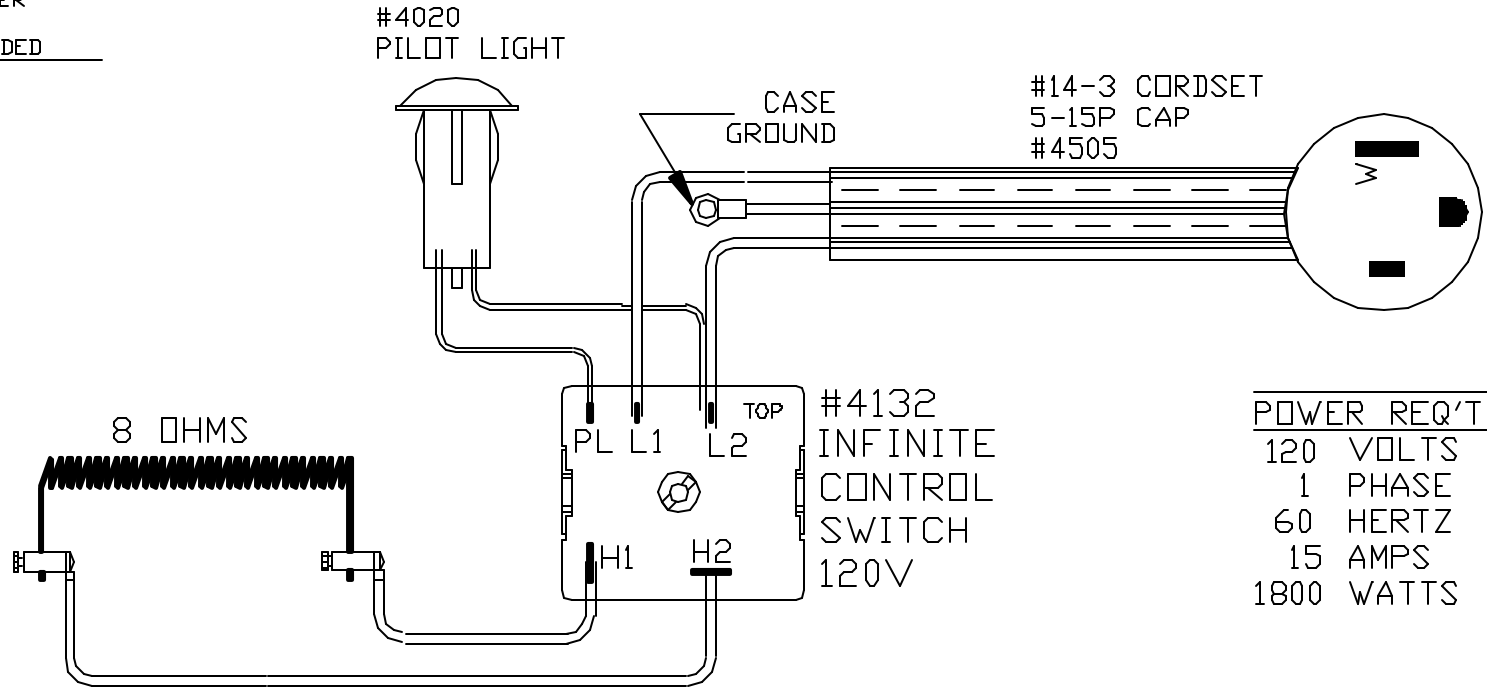


WIRING NOTE

ALL WIRES #14 AWG,
TYPE SEW/SF2 MINIMUM
UNLESS OTHERWISE NOTED

CAUTION!

TO PROVIDE CONTINUED
PROTECTION AGAINST THE
RISK OF ELECTRIC SHOCK
CUSTOMER'S POWER
SUPPLY MUST BE
PROPERLY GROUNDED



POWER REQ'TS
120 VOLTS
1 PHASE
60 HERTZ
15 AMPS
1800 WATTS

TO RE-ORDER ELEMENTS, SPECIFY		
DESCRIPTION	QTY	LOC
ELXX4	1	SIDES

STAINLESS STEEL CASE

NOTE: PLEASE REFER
TO THIS NUMBER WHEN
ORDERING PARTS FOR
THIS KILN

ORIGINAL ISSUE 3/23/99 BY DTB	
DATE	BY
-	-

SW BOX #4547

PARAGON INDUSTRIES
2011 SOUTH TOWN EAST BLVD
MESQUITE, TEXAS 75149

WIRING DIAGRAM
XX4 - BASIC
120V 1PH 60HZ 1800W

N/C

2000°F

PART NO.	XX4	REV	-
By BILL R			