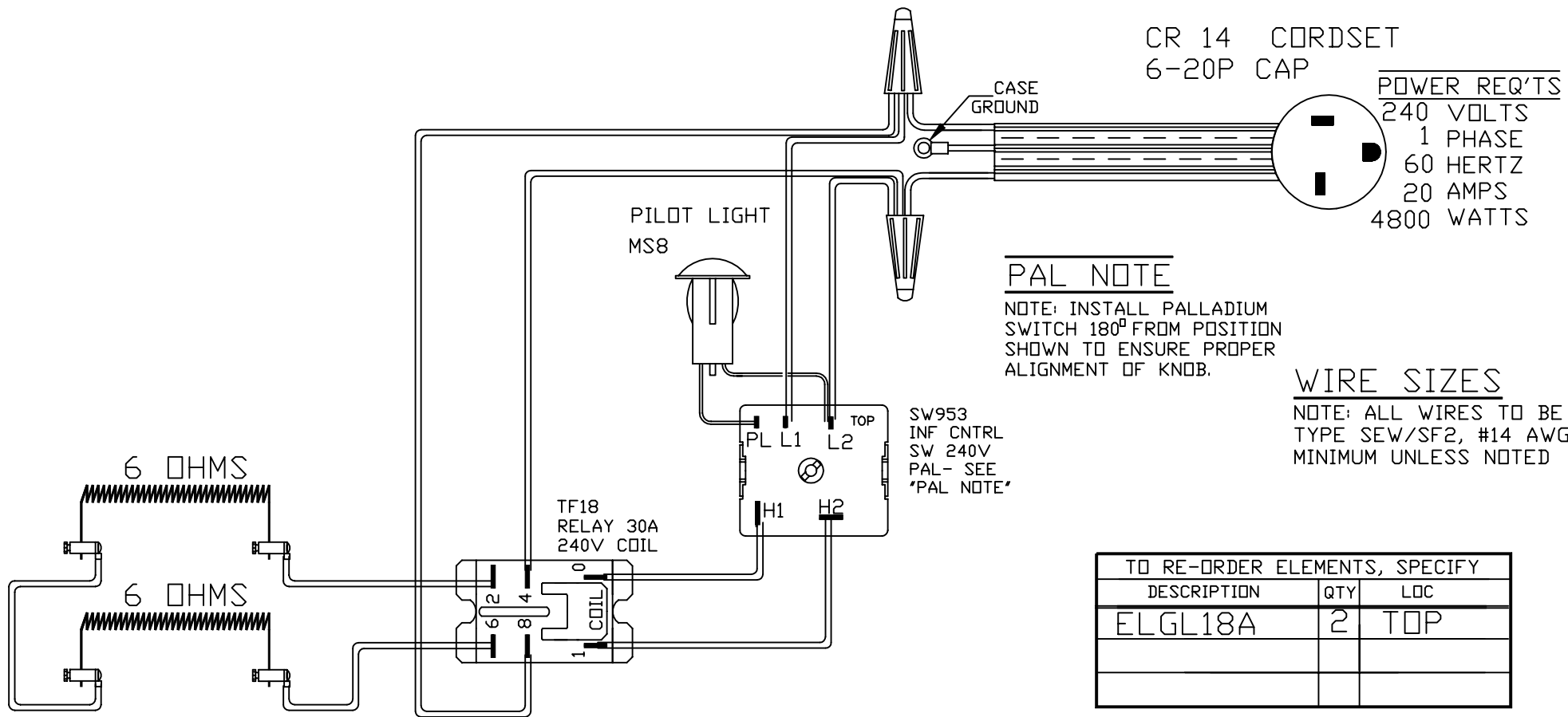


PART NO GL18A



CR 14 CORDSET
6-20P CAP

POWER REQ'TS	
240 VOLTS	
1 PHASE	
60 HERTZ	
20 AMPS	
4800 WATTS	

PAL NOTE

NOTE: INSTALL PALLADIUM SWITCH 180° FROM POSITION SHOWN TO ENSURE PROPER ALIGNMENT OF KNOB.

WIRE SIZES

NOTE: ALL WIRES TO BE TYPE SEW/SF2, #14 AWG MINIMUM UNLESS NOTED

SW953
INF CNTRL
SW 240V
PAL- SEE
'PAL NOTE'

TO RE-ORDER ELEMENTS, SPECIFY		
DESCRIPTION	QTY	LOC
ELGL18A	2	TOP

PAINTED
STEEL CASE
MAX. TEMP.
927°C
1700°F

REV	DATE	BY	DESCRIPTION	SWITCH BOX ASSY-	WIRING DIAGRAM	PART NO.	REV
-	3-14-01	RLG		PARAGON INDUSTRIES 2011 SOUTH TOWN EAST BLVD MESQUITE, TEXAS 75149	240V 1 PHASE 60 HZ 4800 WATTS	GL18A	-
						GL18A TOP FIRE ONLY	FILE