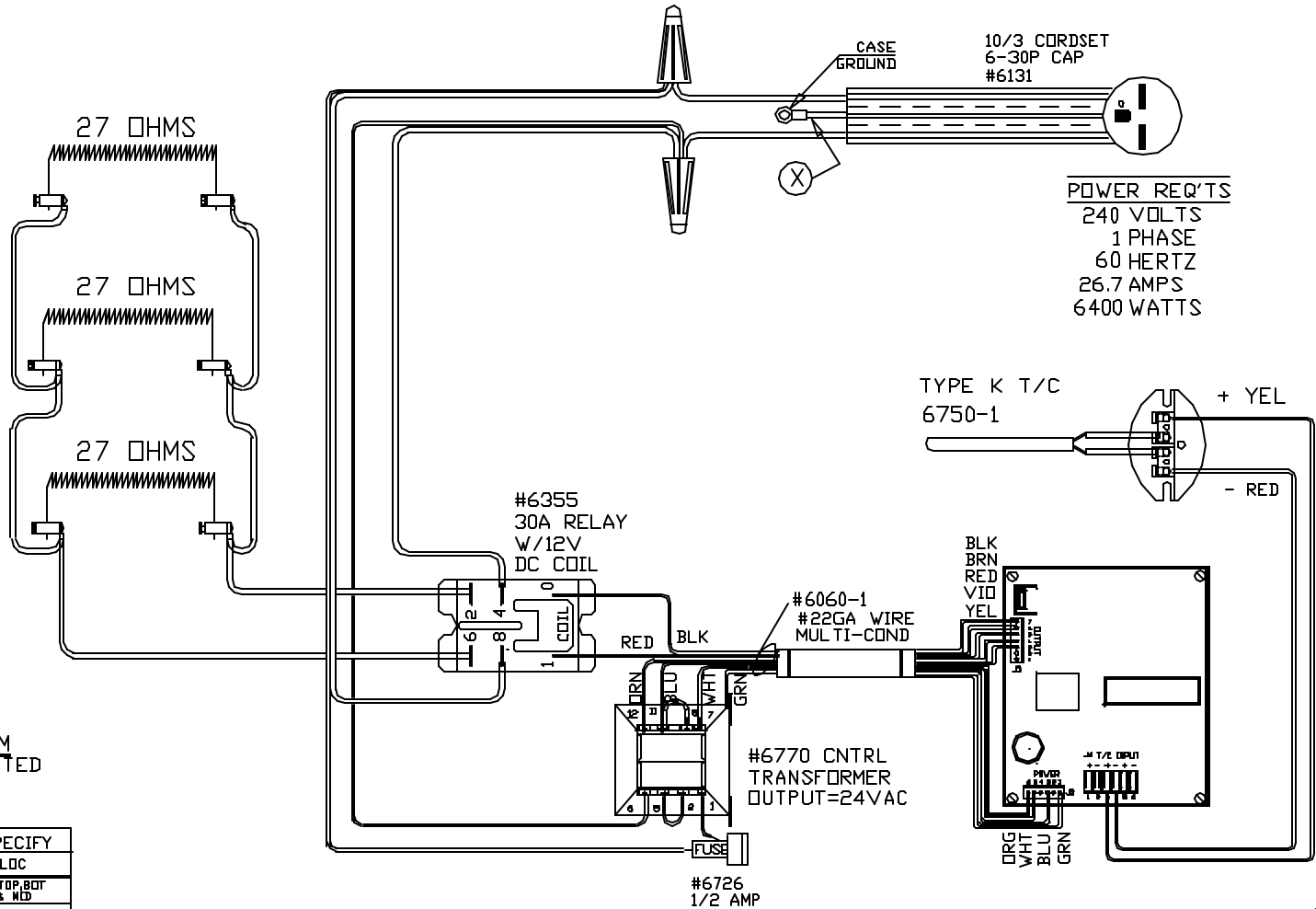


**CAUTION**

TO PROVIDE CONTINUED PROTECTION AGAINST THE RISK OF ELECTRIC SHOCK, CUSTOMER'S POWER SUPPLY MUST BE PROPERLY GROUNDED.

NOTE: GROUNDING SCREW TO HAVE A GREEN COLORED SLOTTED AND/OR HEX HEAD NO SUBSTITUTES. USE #1005

NOTE: THE SURFACE OF THE INSULATED WIRES MARKED (X) TO BE COLORED GREEN, WITH OR WITHOUT ONE OR MORE YELLOW STRIPES.



**POWER REQ'TS**  
 240 VOLTS  
 1 PHASE  
 60 HERTZ  
 26.7 AMPS  
 6400 WATTS

**WIRING NOTE**

ALL WIRES #10 AWG, TYPE SEW/SF2 MINIMUM UNLESS OTHERWISE NOTED

TO RE-ORDER ELEMENTS, SPECIFY		
DESCRIPTION	QTY	LOC
EL 866111E00TBM	3	TOP BOT & MID

REV	DATE	BY	DESCRIPTION
	2-12-98	NLN	
A	10-5-99	BR	CHG CNTRL BD TO DTC1000C
B	7-17-01	BR	CHG CNTRL BD TO SEN 1000C
C	12/11/02	DTB	CHG WIRE NOTE TO 10 GA

SWITCH BOX ASSY- 497B  
 PARAGON INDUSTRIES  
 2011 SOUTH TOWN EAST BLVD  
 MESQUITE, TEXAS 75149

I/C  
**WIRING DIAGRAM**  
 240V, 1PHASE, 60HZ, 6400WATTS

CONE FIRE SENTRY 2.0 2350° F

CATALOG STANDARD  
 UL/CUL LISTED

PART NO.	REV
866111E00	C
TNF1613-3-SEN 1000C	FILE