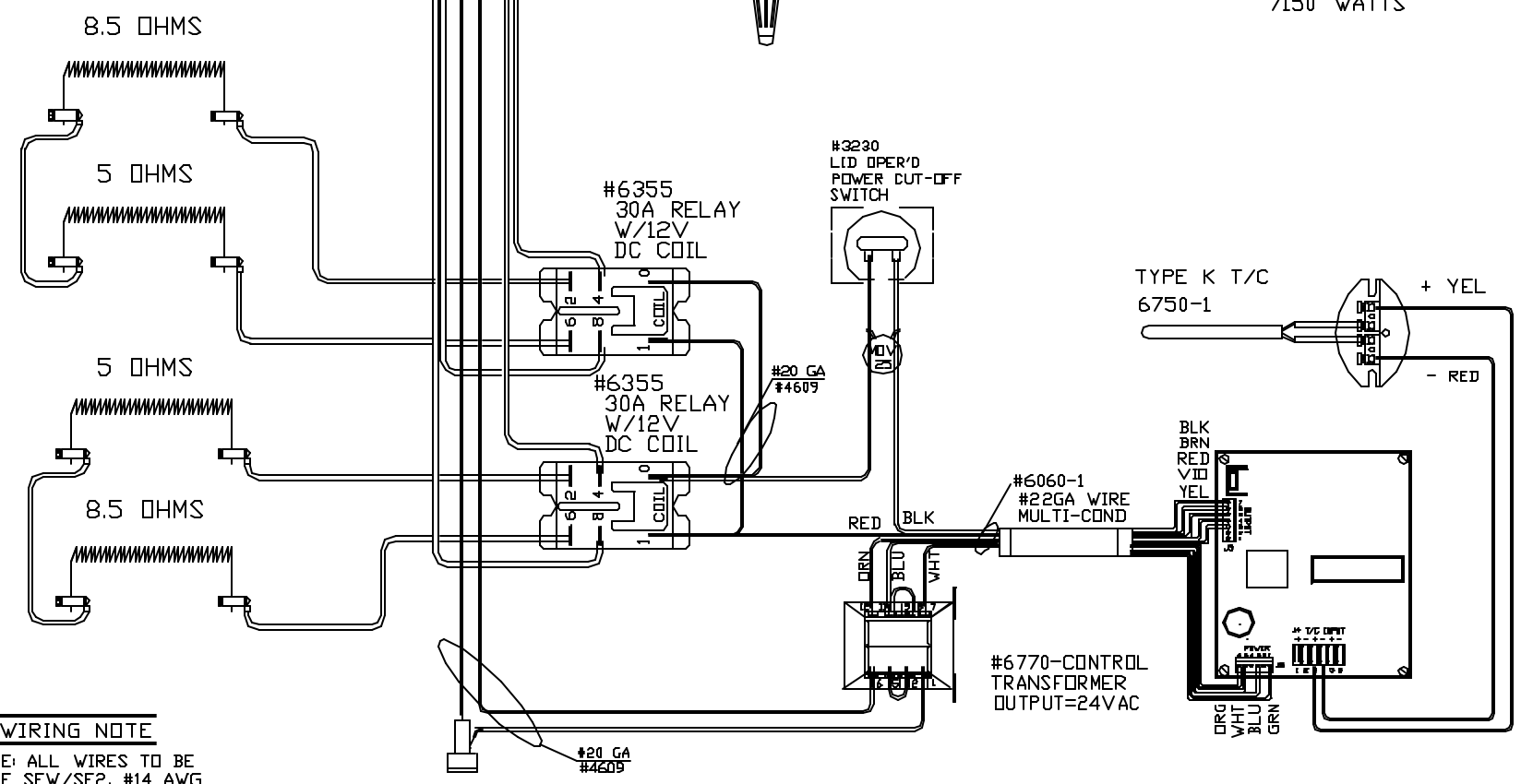


PART NO 8352211G00

**CAUTION**

TO PROVIDE CONTINUED PROTECTION AGAINST THE RISK OF ELECTRIC SHOCK, CUSTOMER'S POWER SUPPLY MUST BE PROPERLY GROUNDED.

**POWER REQ'TS**  
 220 VOLTS  
 1 PHASE  
 50 HERTZ  
 32.5 AMPS  
 7150 WATTS



**WIRING NOTE**

NOTE: ALL WIRES TO BE TYPE SEW/SF2, #14 AWG MINIMUM UNLESS NOTED

TO RE-ORDER ELEMENTS, SPECIFY		
DESCRIPTION	QTY	LOC
EL8352211TB	2	TOP&BOT
EL8352211M	2	MIDDLE

CONE FIRE SENTRY 2.0

NOTE: PLEASE REFER TO THIS NUMBER WHEN ORDERING PARTS FOR THIS ICEN

IC  
 MAX. TEMP.  
 1288°C  
 2350°F

REV	DATE	BY	DESCRIPTION
-	2/17/00	DTB	
A	2-17-00	BR	CHG CNTRL BD TO DTC 1000C
B	05/06/02	DTB	CHG SBA,DOB,SEN BD

SWITCH BOX ASSY- 42024-2  
 PARAGON INDUSTRIES  
 2011 SOUTH TOWN EAST BLVD  
 MESQUITE, TEXAS 75149

**WIRING DIAGRAM**  
 220V 1 PHASE 60HZ 7150WATTS

PART NO	REV
8352211G00	B
TNF 823	FILE