

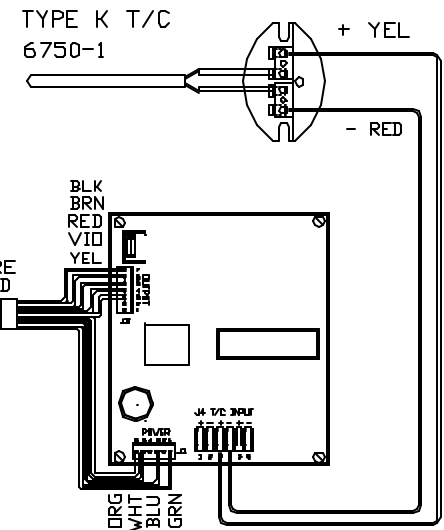
CAUTION
 TO PROVIDE CONTINUED PROTECTION AGAINST THE RISK OF ELECTRIC SHOCK, CUSTOMER'S POWER SUPPLY MUST BE PROPERLY GROUNDED.

NOTE: GROUNDING SCREW TO HAVE A GREEN COLORED SLOTTED AND/OR HEX HEAD NO SUBSTITUTES. USE #1005

NOTE: THE SURFACE OF THE INSULATED WIRES MARKED (X) TO BE COLORED GREEN, WITH OR WITHOUT ONE OR MORE YELLOW STRIPES.

POWER REQ'TS
 240 VOLTS
 1 PHASE
 60 HERTZ
 48 AMPS
 11500 WATTS

WIRING NOTE
 ALL WIRES #14 AWG, TYPE SEW/SF2 MINIMUM UNLESS OTHERWISE NOTED



CONE FIRE
 SENTRY 2.0
 CFG 21
 2300°F

TO RE-ORDER ELEMENTS, SPECIFY		
DESCRIPTION	QTY	LOC
EL8061111G00TB	2	TOP&BOT
EL8061111G00TB	4	MIDDLE

SWITCH BOX ASSY- 42022-1

PARAGON INDUSTRIES
 2011 SOUTH TOWN EAST BLVD
 MESQUITE, TEXAS 75149

WIRING DIAGRAM
 240V, 1 PHASE, 60HZ, 11500WATTS

NOTE: PLEASE REFER TO THIS NUMBER WHEN ORDERING PARTS FOR THIS KILN

PART NO	8061111G00	REV	-
TNF 24	SECTIONAL	FILE	