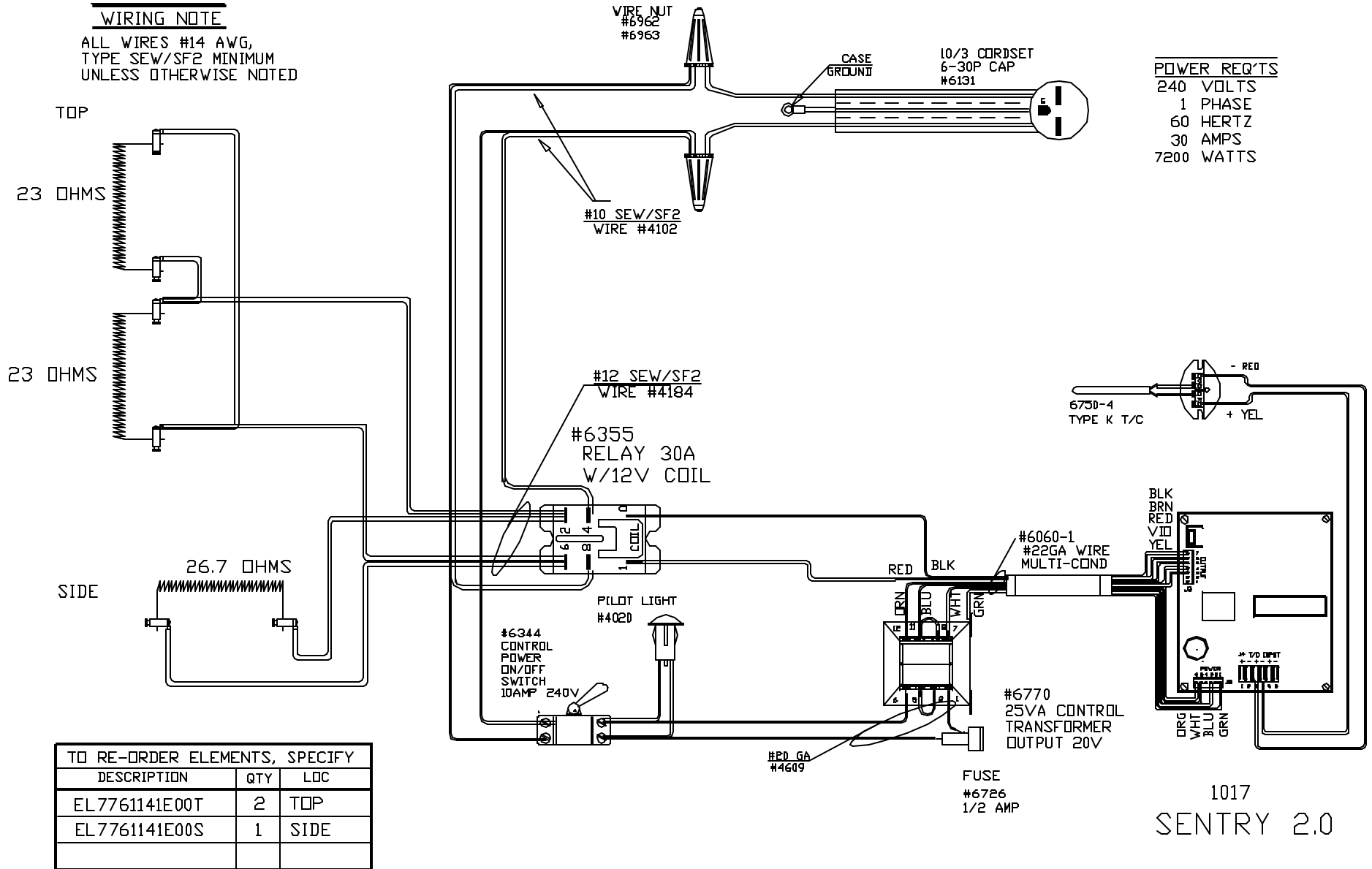


WIRING NOTE

ALL WIRES #14 AWG,
TYPE SEW/SF2 MINIMUM
UNLESS OTHERWISE NOTED



POWER REQ'TS
240 VOLTS
1 PHASE
60 HERTZ
30 AMPS
7200 WATTS

1017
SENTRY 2.0

TO RE-ORDER ELEMENTS, SPECIFY		
DESCRIPTION	QTY	LOC
EL7761141E00T	2	TOP
EL7761141E00S	1	SIDE

NOTE: PLEASE REFER
TO THIS NUMBER WHEN
ORDERING PARTS FOR
THIS KILN

CFG 5
1700°F

REV	DATE	BY	DESCRIPTION
-	3-25-04	DTB	

SWITCH BOX ASSY- 42066-1

PARAGON INDUSTRIES
2011 SOUTH TOWN EAST BLVD
MESQUITE, TEXAS 75149

WIRING DIAGRAM

240V, 1 PHASE, 60HZ 7200WATTS

PART NO.	REV
7761141E00	-
22X22X13 PEARL22	FILE