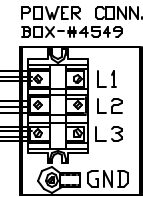
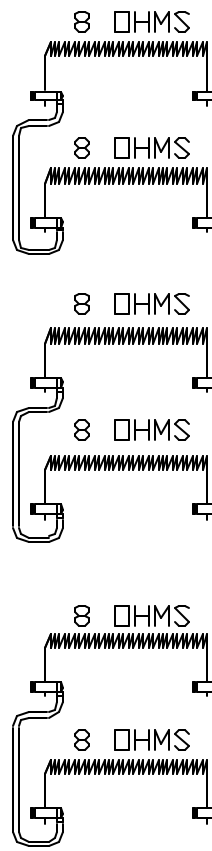
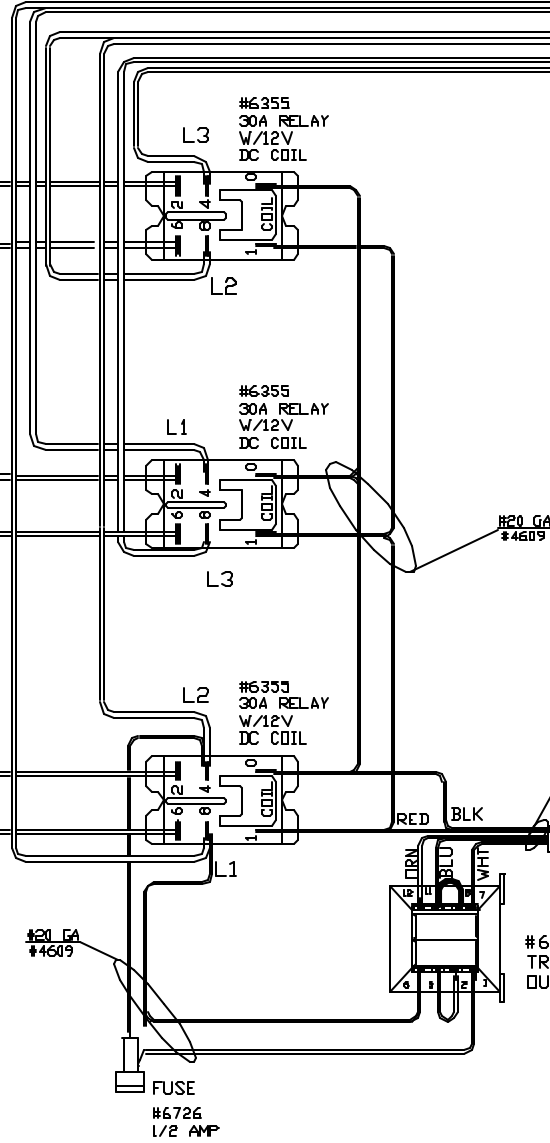


PART NO 3091111A00

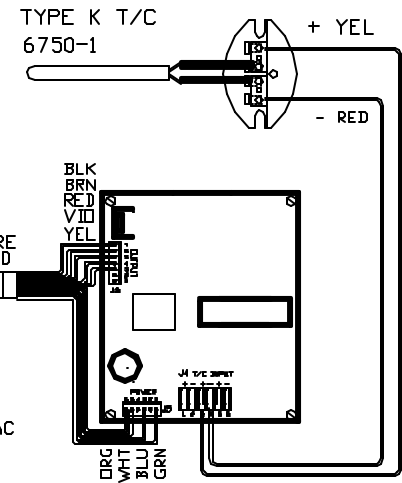


POWER REQ'TS
 240 VOLTS
 3 PHASE DELTA
 60 HERTZ
 26 AMPS / LINE
 10800 WATTS



CAUTION
 TO PROVIDE CONTINUED PROTECTION AGAINST THE RISK OF ELECTRIC SHOCK, CUSTOMER'S POWER SUPPLY MUST BE PROPERLY GROUNDED.

WIRING NOTE
 ALL WIRES #14 AWG, TYPE SEW/SF2 MINIMUM UNLESS OTHERWISE NOTED



TO RE-ORDER ELEMENTS, SPECIFY		
DESCRIPTION	QTY	LDC
EL3091111TBM	6	TOP, BOT & MID

CONE FIRE SENTRY 2.0

I/C 2150°F

REV	DATE	BY	DESCRIPTION	SWITCH BOX ASSY- 42022-3	WIRING DIAGRAM	PART NO.	REV
-	2/3/03	DTB		PARAGON INDUSTRIES 2011 SOUTH TOWN EAST BLVD MESQUITE, TEXAS 75149	240V, 3PH D ,60HZ 10800WATTS	3091111A00	-
						TNF283 SECT	FILE