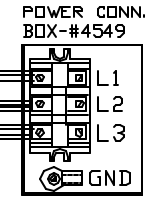
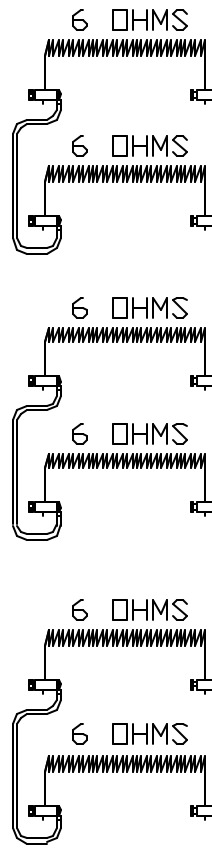
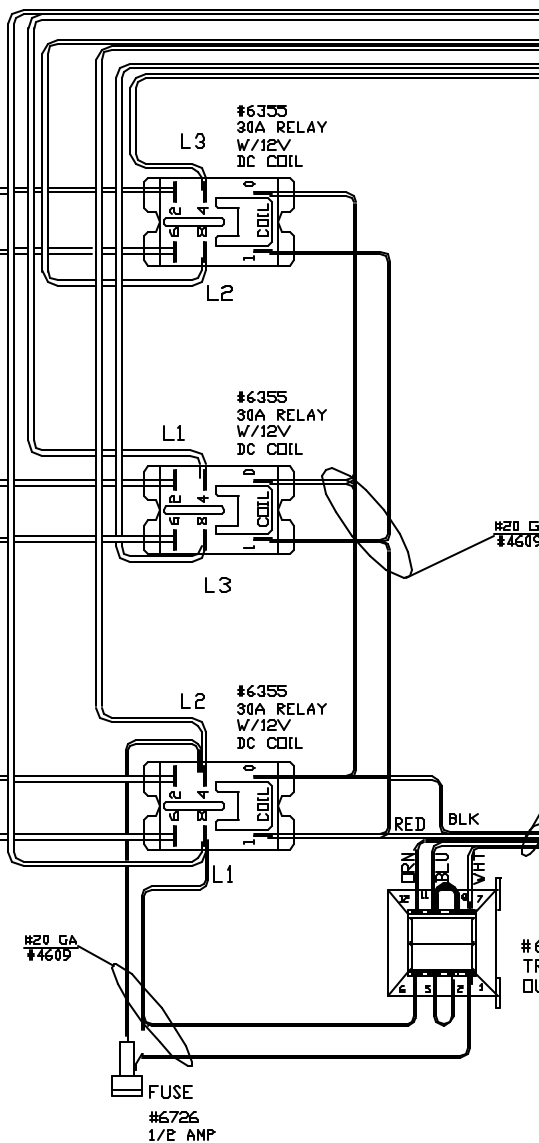


PART NO 3071111A00

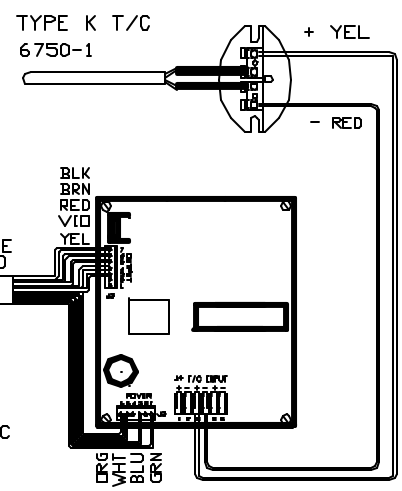


POWER REQ'TS
208 VOLTS
3 PHASE DELTA
60 HERTZ
30 AMPS / LINE
10800 WATTS



CAUTION
TO PROVIDE CONTINUED
PROTECTION AGAINST THE
RISK OF ELECTRIC SHOCK,
CUSTOMER'S POWER
SUPPLY MUST BE
PROPERLY GROUNDED.

WIRING NOTE
ALL WIRES #14 AWG,
TYPE SEW/SF2 MINIMUM
UNLESS OTHERWISE NOTED



TO RE-ORDER ELEMENTS, SPECIFY		
DESCRIPTION	QTY	LOC
EL 3071111TBM	6	TOP, BOT & MID

CONE FIRE
SENTRY 2.0
I/C 2150°F

REV	DATE	BY	DESCRIPTION
-	1E/07/01	DTB	

SWITCH BOX ASSY- 42022-3
PARAGON INDUSTRIES
2011 SOUTH TOWN EAST BLVD
MESQUITE, TEXAS 75149

WIRING DIAGRAM
208V, 3PH D ,60HZ 10800WATTS

PART NO 3071111A00
TNF283 SECT

REV -
FILE