

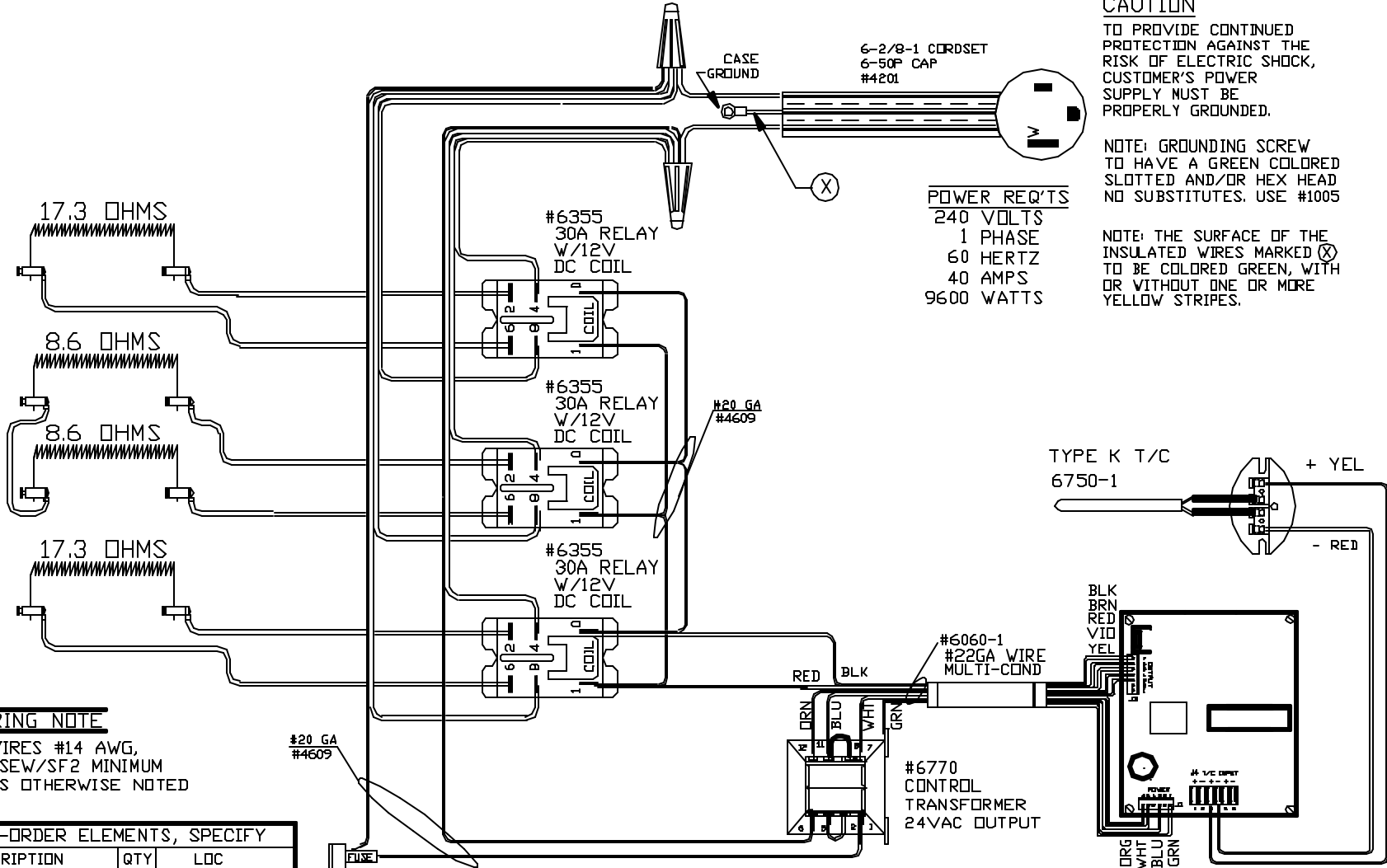
CAUTION

TO PROVIDE CONTINUED PROTECTION AGAINST THE RISK OF ELECTRIC SHOCK, CUSTOMER'S POWER SUPPLY MUST BE PROPERLY GROUNDED.

NOTE: GROUNDING SCREW TO HAVE A GREEN COLORED SLOTTED AND/OR HEX HEAD NO SUBSTITUTES. USE #1005

NOTE: THE SURFACE OF THE INSULATED WIRES MARKED (X) TO BE COLORED GREEN, WITH OR WITHOUT ONE OR MORE YELLOW STRIPES.

POWER REQ'TS
 240 VOLTS
 1 PHASE
 60 HERTZ
 40 AMPS
 9600 WATTS



WIRING NOTE

ALL WIRES #14 AWG, TYPE SEW/SF2 MINIMUM UNLESS OTHERWISE NOTED

TO RE-ORDER ELEMENTS, SPECIFY

DESCRIPTION	QTY	LOC
EL2361111G00TB	2	TOP&BOT
EL2361111G00M	2	MIDDLE

CONE FIRE SENTRY 2.0

UL/CUL LISTED

2350° F

IC

NOTE: PLEASE REFER TO THIS NUMBER WHEN ORDERING PARTS FOR THIS KILN

REV	DATE	BY	DESCRIPTION
-	8/4/03	DTB	

SWITCH BOX ASSY- 42023-5

PARAGON INDUSTRIES
 2011 SOUTH TOWN EAST BLVD
 MESQUITE, TEXAS 75149

WIRING DIAGRAM

240V, 1PHASE, 60HZ, 9600WATTS

PART NO	REV
236111G00	-
	FILE