

| TO RE-ORDER ELEMENTS, SPECIFY |     |       |
|-------------------------------|-----|-------|
| DESCRIPTION                   | QTY | LOC   |
| EL10211J1BTAS                 | 2   | SIDES |
|                               |     |       |
|                               |     |       |

HIGH TEMP CS/HSJ/HSJD

#60050  
#14-3 CORDSET  
5-15P CAP

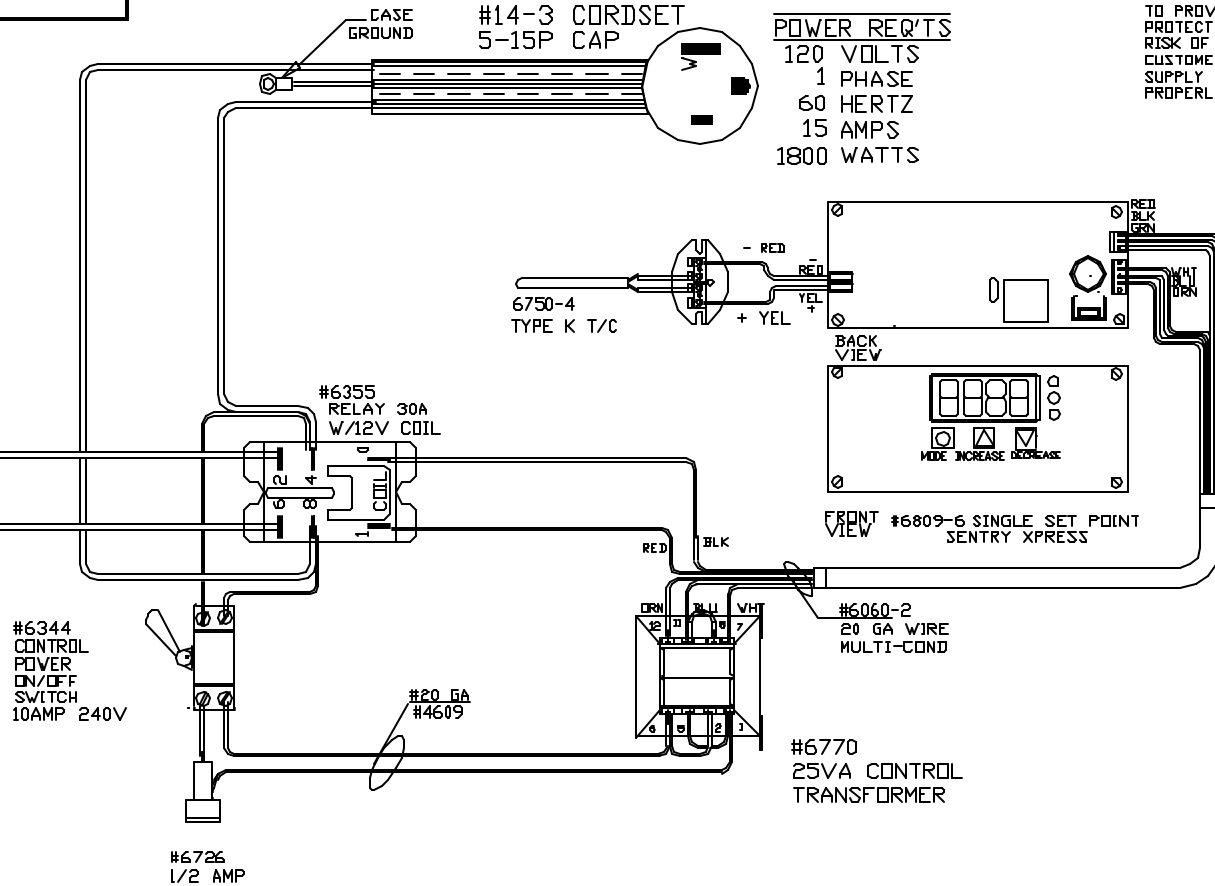
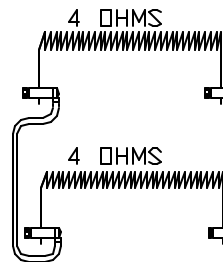
POWER REQ'TS  
120 VOLTS  
1 PHASE  
60 HERTZ  
15 AMPS  
1800 WATTS

CAUTION

TO PROVIDE CONTINUED PROTECTION AGAINST THE RISK OF ELECTRIC SHOCK, CUSTOMER'S POWER SUPPLY MUST BE PROPERLY GROUNDED.

WIRING NOTE

ALL WIRES #14 AWG, TYPE SEW/SF2 MINIMUM UNLESS OTHERWISE NOTED



CFG1

NOTE: PLEASE REFER TO THIS NUMBER WHEN ORDERING PARTS FOR THIS KILN

MAX. TEMP.  
2250°F

| REV | DATE    | BY  | DESCRIPTION |
|-----|---------|-----|-------------|
| -   | 7/12/04 | JTB |             |
|     |         |     |             |
|     |         |     |             |
|     |         |     |             |

SWITCH BOX ASSY- 42065-1

PARAGON INDUSTRIES  
2011 SOUTH TOWN EAST BLVD  
MESQUITE, TEXAS 75149

WIRING DIAGRAM

120V , 1 PHASE , 60HZ , 1800WATTS

| PART NO.         | REV  |
|------------------|------|
| 10211J1BTA       | -    |
| E10T EXPRESS SSP | FILE |