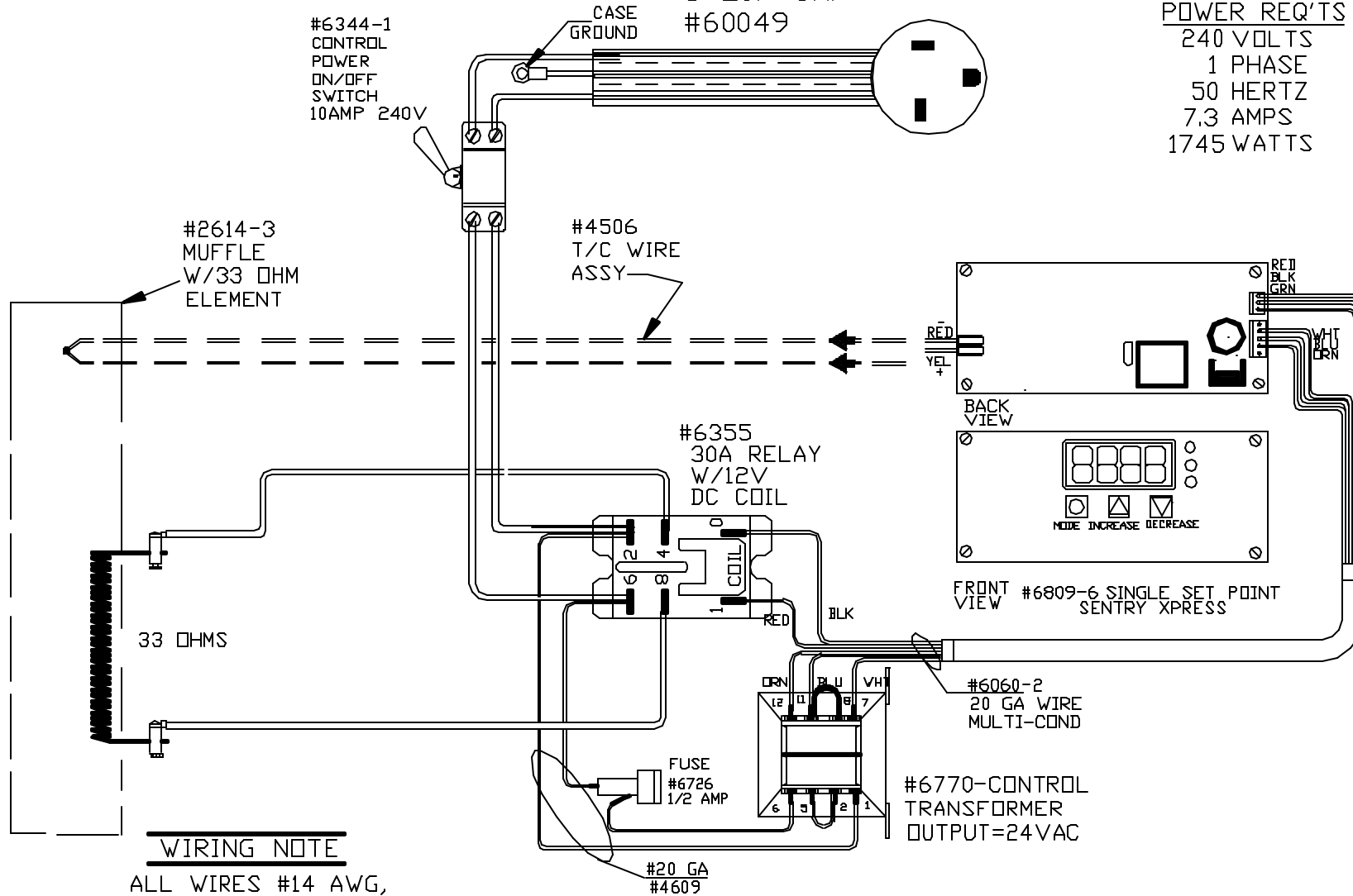


PART NO 02621J4D00

HIGH TEMP CS/HSJ/HSJD
 #12-3 CORDSET
 6-20P CAP
 #60049

POWER REQ'TS
 240 VOLTS
 1 PHASE
 50 HERTZ
 7.3 AMPS
 1745 WATTS



WIRING NOTE

ALL WIRES #14 AWG,
 TYPE SEW/SF2 MINIMUM
 UNLESS OTHERWISE NOTED

CFG 1
 PAINTED
 STEEL CASE
 1093°C
 2000°F

NOTE: PLEASE REFER
 TO THIS NUMBER WHEN
 ORDERING PARTS FOR
 THIS KILN

REV	DATE	BY	DESCRIPTION
-	1/28/04	DTB	

SWITCH BOX ASSY- 42021-6
 PARAGON INDUSTRIES
 2011 SOUTH TOWN EAST BLVD
 MESQUITE, TEXAS 75149

WIRING DIAGRAM
 240V, 1 PHASE, 50HZ 1745WATTS

PART NO	REV
02621J4D00	-
SC2 W/SSP BD	FILE