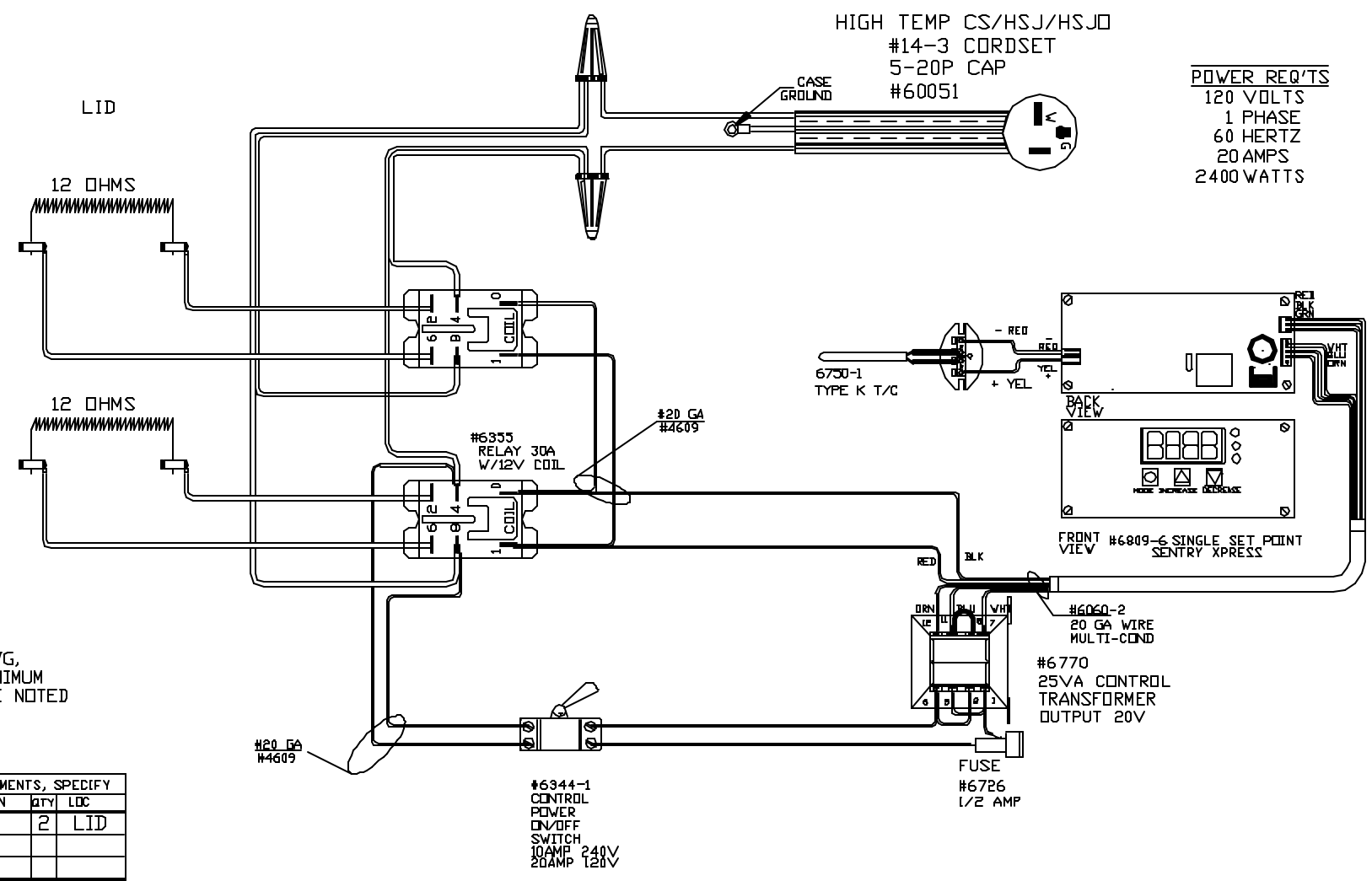


HIGH TEMP CS/HSJ/HSJD
 #14-3 CORDSET
 5-20P CAP
 #60051

POWER REQ/TS
 120 VOLTS
 1 PHASE
 60 HERTZ
 20 AMPS
 2400 WATTS



WIRING NOTE
 ALL WIRES #14 AWG,
 TYPE SEW/SF2 MINIMUM
 UNLESS OTHERWISE NOTED

TO RE-ORDER ELEMENTS, SPECIFY		
DESCRIPTION	QTY	LOC
ELS1324T	2	LID

NOTE: PLEASE REFER
 TO THIS NUMBER WHEN
 ORDERING PARTS FOR
 THIS KILN

CFG 1
 1700°F
 BLUE

REV	DATE	BY	DESCRIPTION
-	7/12/10	DTB	

SWITCH BOX ASSY- 42197-1
 PARAGON INDUSTRIES
 2011 SOUTH TOWN EAST BLVD
 MESQUITE, TEXAS 75149

WIRING DIAGRAM
 120V ,1 PHASE ,60HZ 2400 WATTS

PART NO.	REV
S1324	-
CS16 DUAL	