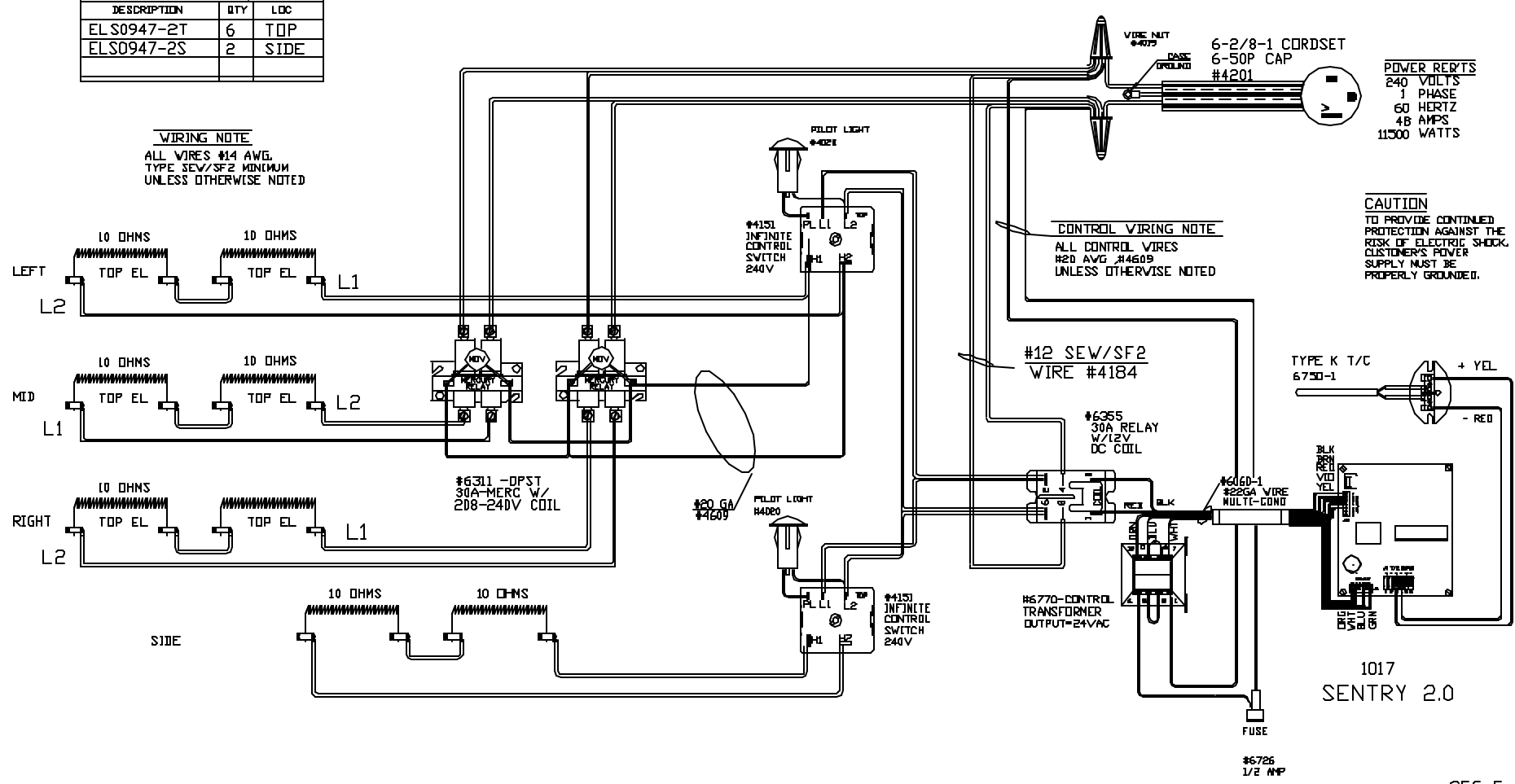


TO RE-ORDER ELEMENTS, SPECIFY		
DESCRIPTION	QTY	LOC
ELS0947-2T	6	TOP
ELS0947-2S	2	SIDE

**WIRING NOTE**  
 ALL WIRES #14 AWG.  
 TYPE SEV/SF2 MINIMUM  
 UNLESS OTHERWISE NOTED



**POWER REPTS**  
 240 VOLTS  
 1 PHASE  
 60 HERTZ  
 48 AMPS  
 11500 WATTS

**CAUTION**  
 TO PROVIDE CONTINUED  
 PROTECTION AGAINST THE  
 RISK OF ELECTRIC SHOCK,  
 CUSTOMER'S POWER  
 SUPPLY MUST BE  
 PROPERLY GROUNDED.

**CONTROL WIRING NOTE**  
 ALL CONTROL WIRES  
 #20 AVG #4609  
 UNLESS OTHERWISE NOTED

SWITCH BOX ASSY- 42092  
 PARAGON INDUSTRIES  
 2011 SOUTH TOWN EAST BLVD  
 MESQUITE, TEXAS 75149

**WIRING DIAGRAM**  
 240V, 1 PHASE ,60HZ 11500WATTS

REV	DATE	BY	DESCRIPTION	PART NO.	REV
-	9/25/05	ITB		S0947-2	-
				KL 44X22X13	FILE