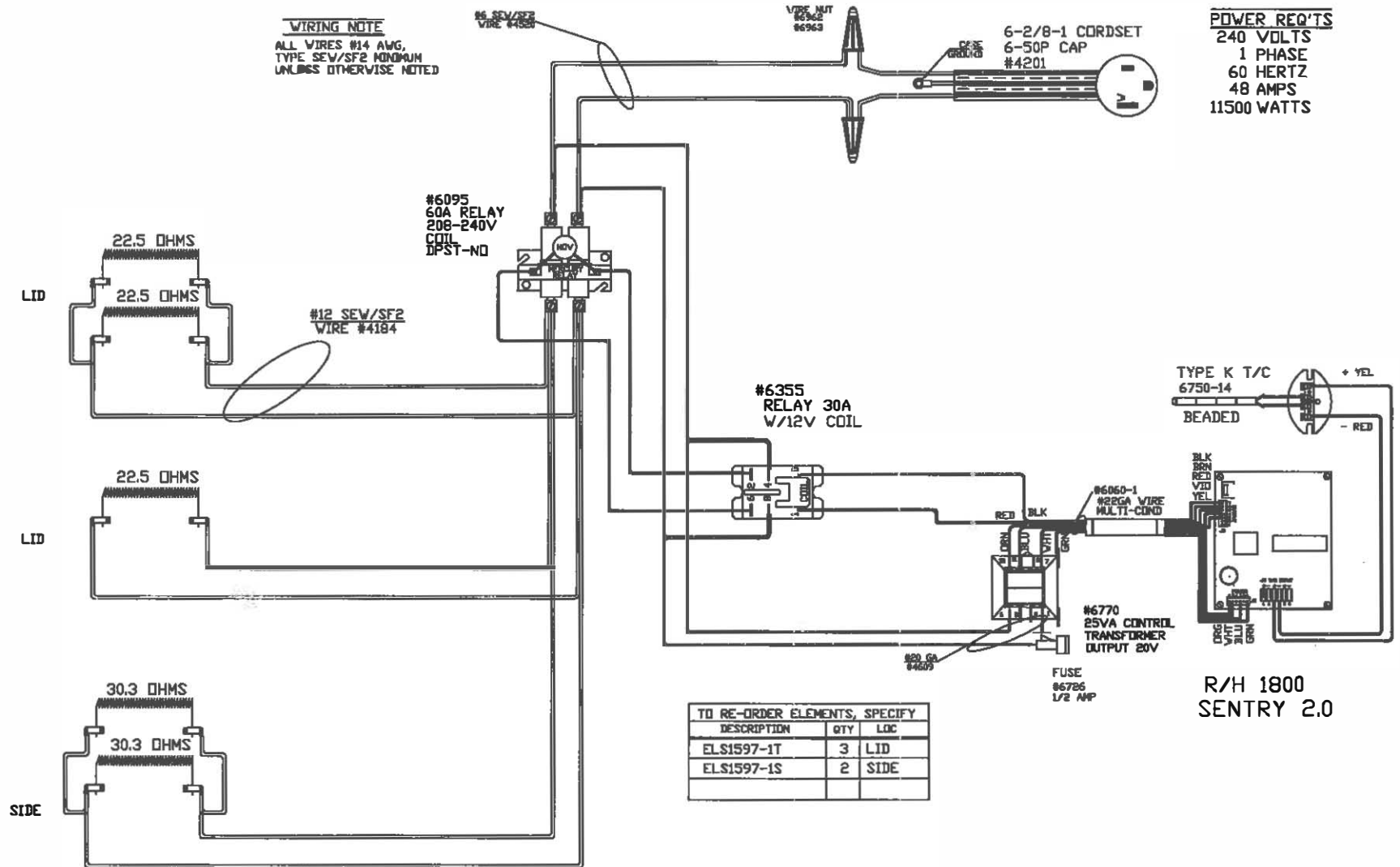


WIRING NOTE
 ALL WIRES #14 AWG,
 TYPE SEV/SF2 MINIMUM
 UNLESS OTHERWISE NOTED

POWER REQ'TS
 240 VOLTS
 1 PHASE
 60 HERTZ
 48 AMPS
 11500 WATTS



TO RE-ORDER ELEMENTS, SPECIFY

DESCRIPTION	QTY	LOC
ELS1597-1T	3	LID
ELS1597-1S	2	SIDE

CFG 5
 1700°F
 45T

REV	DATE	BY	DESCRIPTION
	3/1/16	DTB	

SWITCH BOX ASSY-42280-1

PARAGON INDUSTRIES
 2011 SOUTH TOWN EAST BLVD
 MESQUITE, TEXAS 75149

WIRING DIAGRAM

240V, 1 PHASE, 60HZ 11.5KW

NOTES PLEASE REFER
 TO THIS NUMBER WHEN
 ORDERING PARTS FOR
 THIS KILN

PART NO.	REV
S1597-1	-
12 SIDE OVAL 13.2 DP	FILE