

PART NO GL22AD

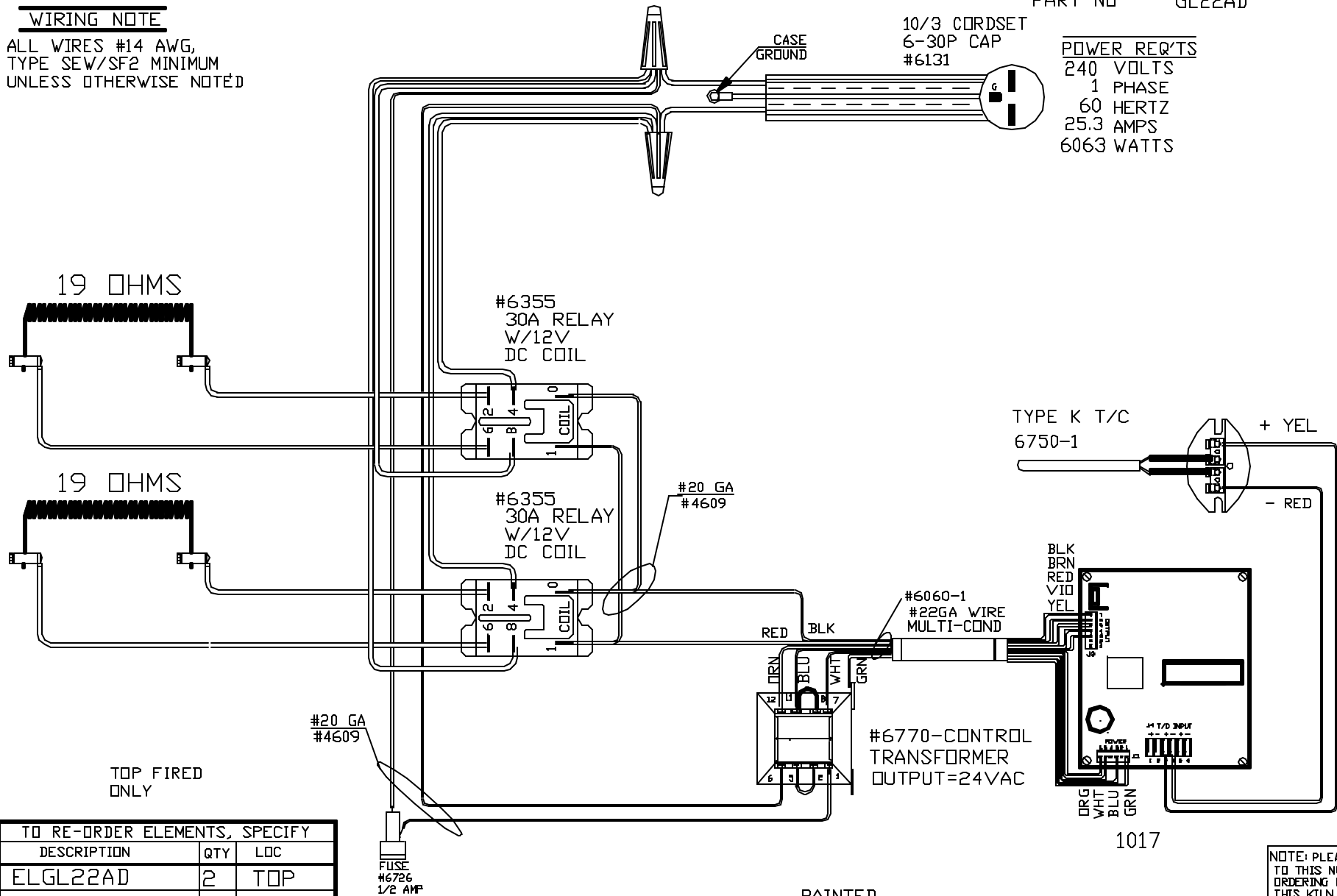
WIRING NOTE

ALL WIRES #14 AWG,
TYPE SEW/SF2 MINIMUM
UNLESS OTHERWISE NOTED

10/3 CORDSET
6-30P CAP
#6131

POWER REQ'TS

240 VOLTS
1 PHASE
60 HERTZ
25.3 AMPS
6063 WATTS



TYPE K T/C
6750-1

+ YEL

- RED

BLK
BRN
RED
VIO
YEL

#6060-1
#22GA WIRE
MULTI-COND

RED BLK

#6770-CONTROL
TRANSFORMER
OUTPUT=24VAC

DRG
VHT
BLU
BLU
GRN

1017

PAINTED
STEEL CASE

SENTRY 2.0

NOTE: PLEASE REFER
TO THIS NUMBER WHEN
ORDERING PARTS FOR
THIS KILN

TO RE-ORDER ELEMENTS, SPECIFY		
DESCRIPTION	QTY	LDC
ELGL22AD	2	TOP

TOP FIRED
ONLY

#20 GA
#4609

FUSE
#6726
1/2 AMP

REV	DATE	BY	DESCRIPTION
-	6-11-96	NJM	
A	8-11-98	NJM	UPDATED DWG, 6-30 CORDSET WAS 10-30
B	10-11-99	BR	CHG CNTRL BD TO DTC 1017
C	2-26-01	BR	CHG CNTRL BD TO SENTRY 1017 & T/C

SWITCH BOX ASSY- 4647

PARAGON INDUSTRIES
2011 SOUTH TOWN EAST BLVD
MESQUITE, TEXAS 75149

CATALOG STANDARD

WIRING DIAGRAM

240V, 1PHASE, 60HZ 6063WATTS

N/C

PART NO	REV
GL22AD	C
GL22AD	FILE