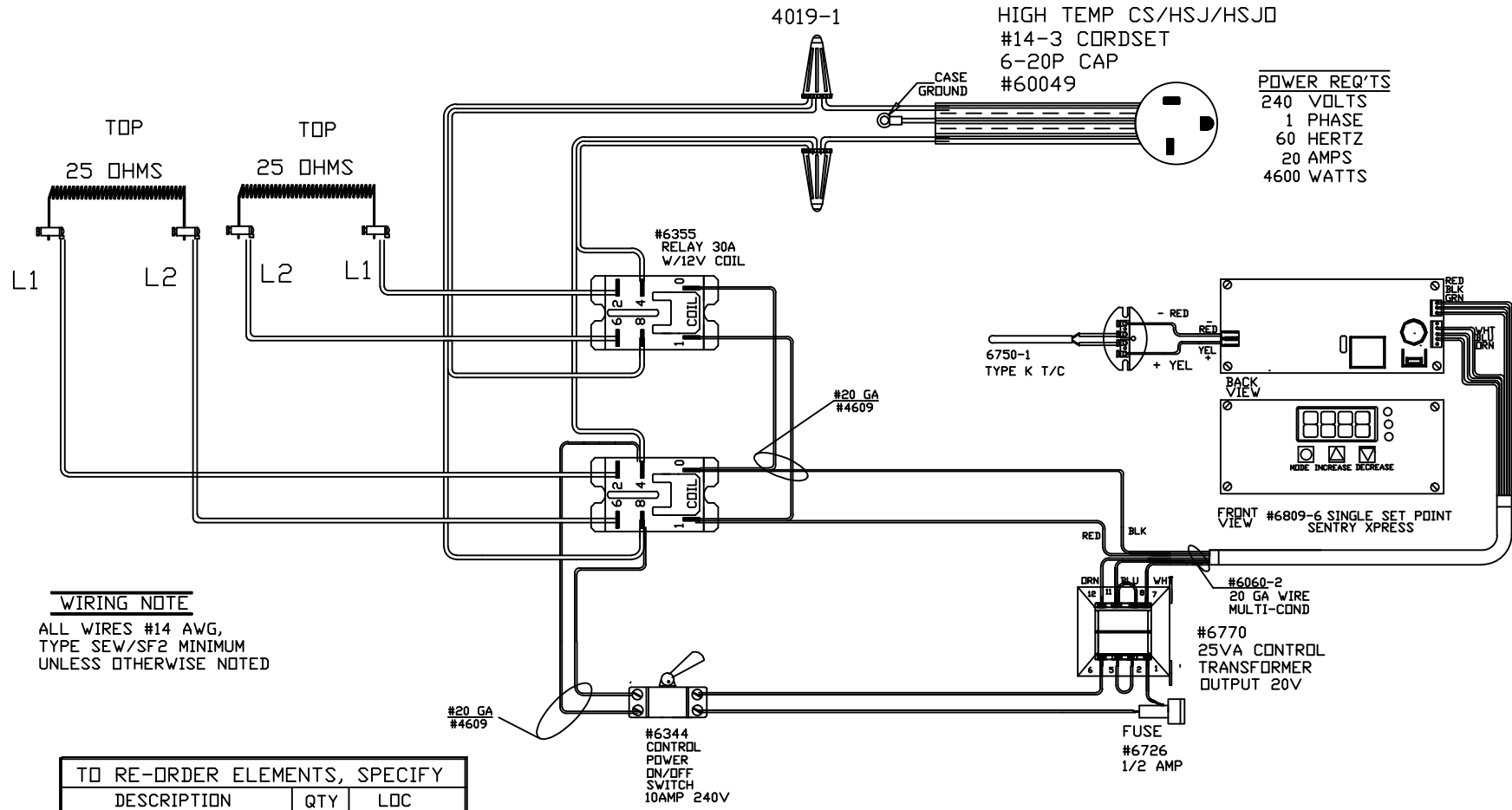


PART NO S1188



WIRING NOTE

ALL WIRES #14 AWG,
TYPE SEW/SF2 MINIMUM
UNLESS OTHERWISE NOTED

TO RE-ORDER ELEMENTS, SPECIFY		
DESCRIPTION	QTY	LOC
ELS1188T	2	TOP

NOTE: PLEASE REFER
TO THIS NUMBER WHEN
ORDERING PARTS FOR
THIS KILN

CFG 1
MAX. TEMP.
1700°F
BLUE

REV	DATE	BY	DESCRIPTION	SWITCH BOX ASSY- 42156	WIRING DIAGRAM	PART NO	S1188	REV	A
-	9/2/08	DTB		PARAGON INDUSTRIES 2011 SOUTH TOWN EAST BLVD MESQUITE, TEXAS 75149		240V, 1 PHASE ,60HZ ,4600WATTS	F200 25X8X15D	FILE	
A	5/22/07	DTB	ADDED 2ND REL						