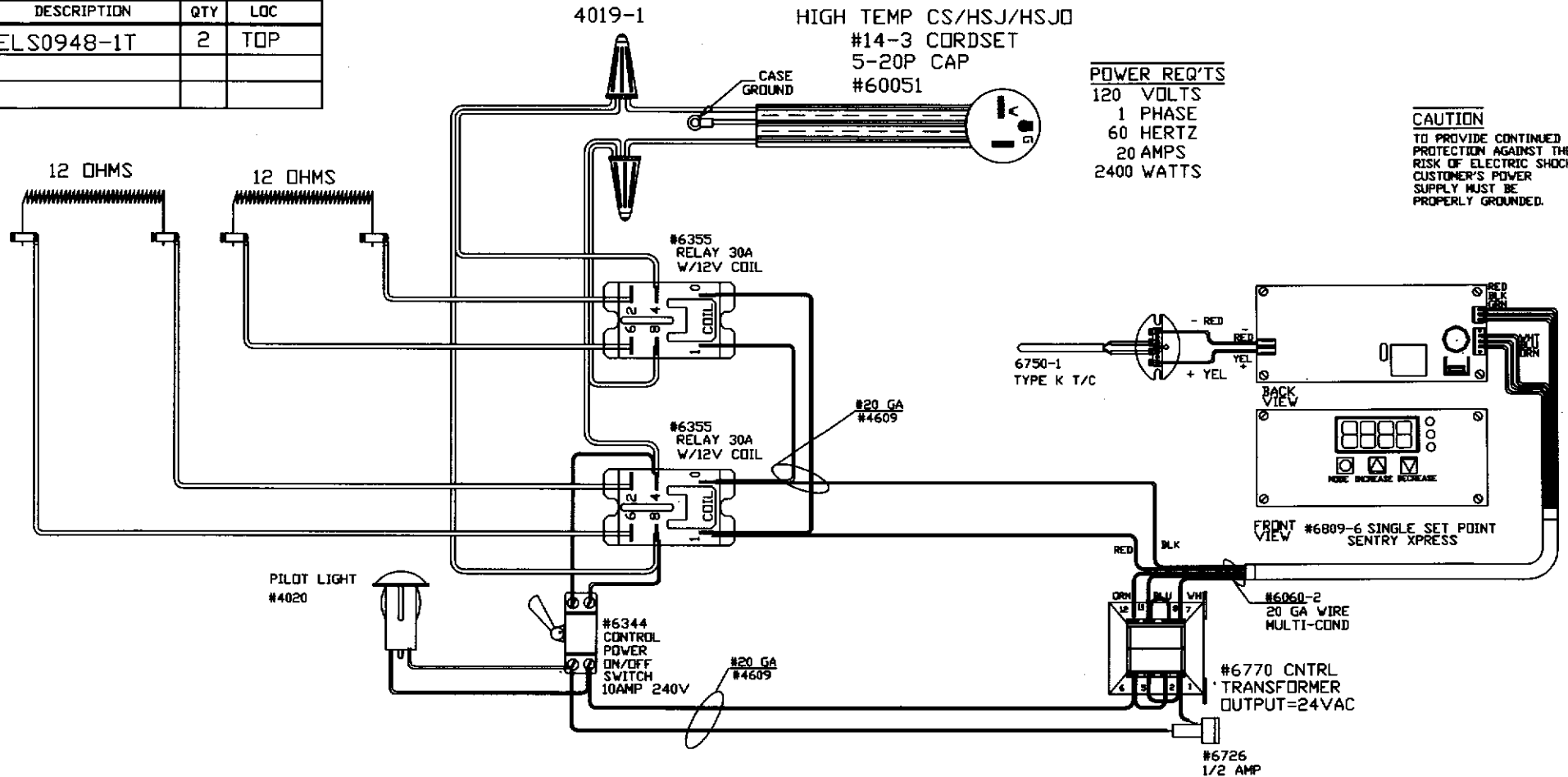


TO RE-ORDER ELEMENTS, SPECIFY		
DESCRIPTION	QTY	LOC
ELS0948-1T	2	TOP



POWER REQ'TS
 120 VOLTS
 1 PHASE
 60 HERTZ
 20 AMPS
 2400 WATTS

CAUTION
 TO PROVIDE CONTINUED PROTECTION AGAINST THE RISK OF ELECTRIC SHOCK, CUSTOMER'S POWER SUPPLY MUST BE PROPERLY GROUNDING.

WIRING NOTE

ALL WIRES #14 AWG,
 TYPE SEW/SF2 MINIMUM
 UNLESS OTHERWISE NOTED

CFG 1

MAX. TEMP.
 1700°F

TUV CERTIFIED

NOTE: PLEASE REFER TO THIS NUMBER WHEN ORDERING PARTS FOR THIS KILN

REV	DATE	BY	DESCRIPTION
-	7/18/05	DTB	
A	1/6/09	DTB	ADDED 2ND REL, CHG T/C

SWITCH BOX ASSY- 42090

PARAGON INDUSTRIES
 2011 SOUTH TOWN EAST BLVD
 MESQUITE, TEXAS 75149

WIRING DIAGRAM

120V ,1 PHASE ,60HZ ,2400WATTS

PART NO	REV
S0948-1	A
11X13X11D	FILE