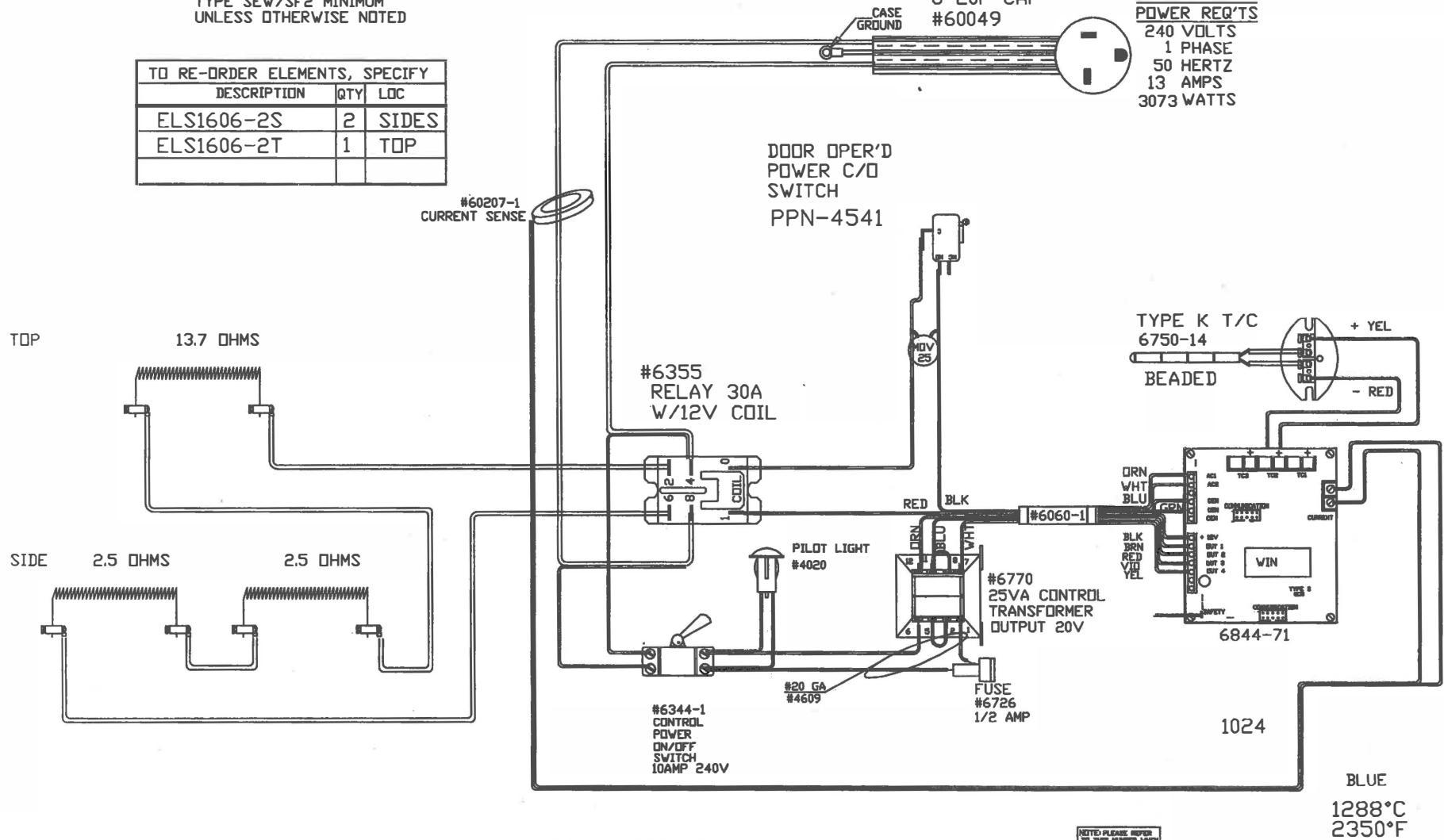


**WIRING NOTE**  
 ALL WIRES #14 AWG,  
 TYPE SEW/SF2 MINIMUM  
 UNLESS OTHERWISE NOTED

TO RE-ORDER ELEMENTS, SPECIFY		
DESCRIPTION	QTY	LOC
ELS1606-2S	2	SIDES
ELS1606-2T	1	TOP

HIGH TEMP CS/HSJ/HSJD  
 #12-3 CORDSET  
 6-20P CAP  
 #60049

**POWER REQ'TS**  
 240 VOLTS  
 1 PHASE  
 50 HERTZ  
 13 AMPS  
 3073 WATTS



REV	DATE	BY	DESCRIPTION
-	6/29/16	DTB	

SWITCH BOX ASSY- 42284-3

PARAGON INDUSTRIES  
 2011 SOUTH TOWN EAST BLVD  
 MESQUITE, TEXAS 75149

WIRING DIAGRAM

240V, 1 PHASE 50HZ 3077WATTS

PART NO.	REV
S1606-2	-
KM 11X4X18	FILE