

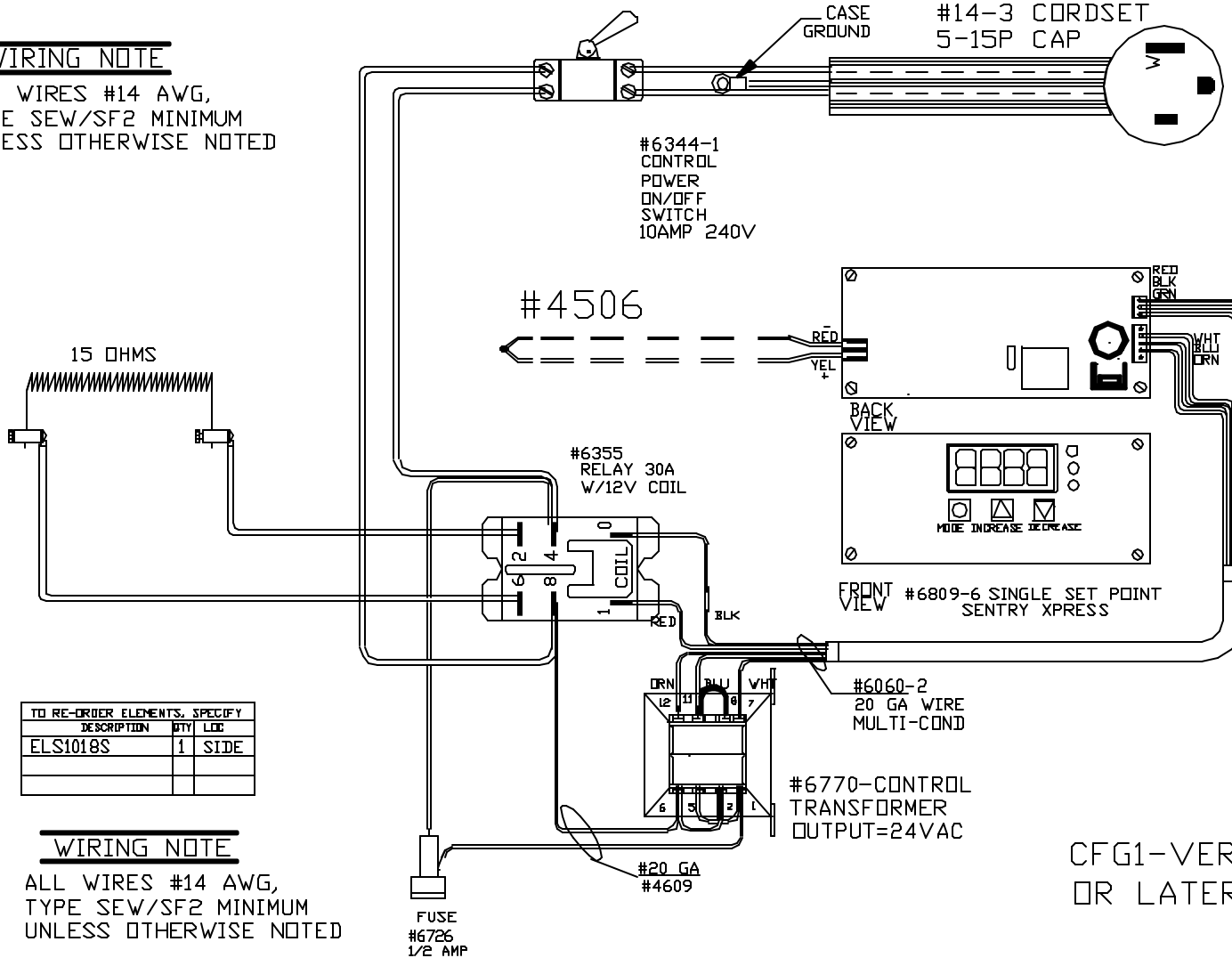
HIGH TEMP CS/HSJ/HSJD

#60050  
#14-3 CORDSET  
5-15P CAP

POWER REQ'TS	
120 VOLTS	
1 PHASE	
60 HERTZ	
8 AMPS	
960 WATTS	

WIRING NOTE

ALL WIRES #14 AWG,  
TYPE SEW/SF2 MINIMUM  
UNLESS OTHERWISE NOTED



TO RE-ORDER ELEMENTS, SPECIFY		
DESCRIPTION	QTY	LOC
ELS1018S	1	SIDE

WIRING NOTE

ALL WIRES #14 AWG,  
TYPE SEW/SF2 MINIMUM  
UNLESS OTHERWISE NOTED

CFG1-VERSION C SOFTWARE  
OR LATER

PAINTED  
STEEL CASE

1200°F

REV	DATE	BY	DESCRIPTION
-	5/05/06	DTB	

SWITCH BOX ASSY- 42101

PARAGON INDUSTRIES  
2011 SOUTH TOWN EAST BLVD  
MESQUITE, TEXAS 75149

WIRING DIAGRAM

120V 1 PHASE 60HZ 960WATTS

PART NO	REV
S1018	-
20X5X5 SSP BEAD FCE	FILE