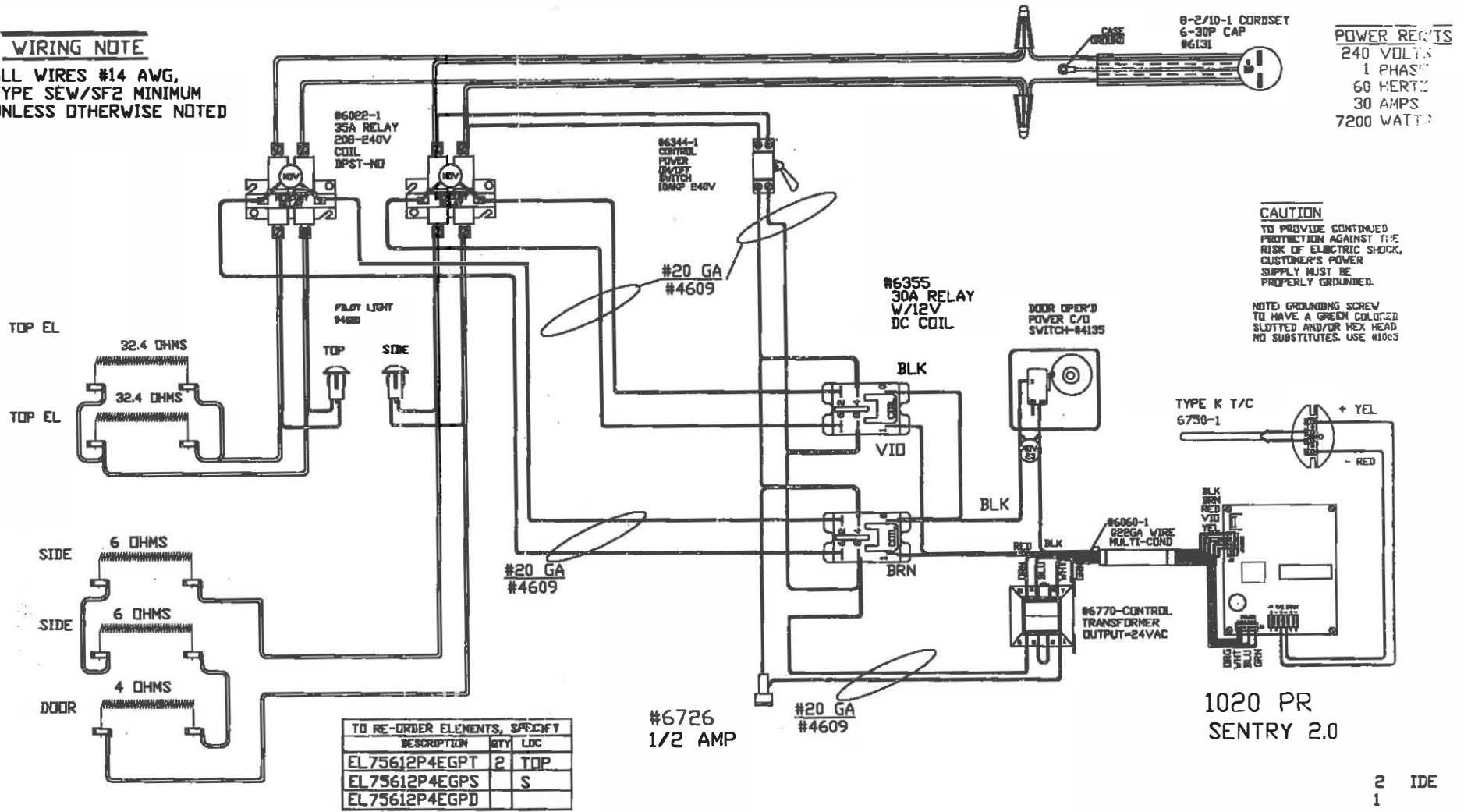


WIRING NOTE

ALL WIRES #14 AWG,
TYPE SEW/SF2 MINIMUM
UNLESS OTHERWISE NOTED

POWER REQUIS
240 VOLTS
1 PHASE
60 HERTZ
30 AMPS
7200 WATTS



TO RE-ORDER ELEMENTS, SPECIFY

DESCRIPTION	QTY	LOC
EL75612P4EGPT	2	TOP
EL75612P4EGPS		S
EL75612P4EGPD		

REV	DATE	BY	DESCRIPTION
-	7/2/12	DTB	

SWITCH BOX ASSY- 40989-23
PARAGON INDUSTRIES
2011 SOUTH TOWN EAST BLVD
MESQUITE, TEXAS 75149

WIRING DIAGRAM
240V, 1 PHASE, 60HZ 7200WATTS

PART NO.	DESCRIPTION
75612P4EGP	
GL18AD-1020	

2 IDE
1
CFR 22
2009F
BLACK
NOTE: RED WIRE NOT USED ON HARN- S
PROFESSIONAL SERIES