

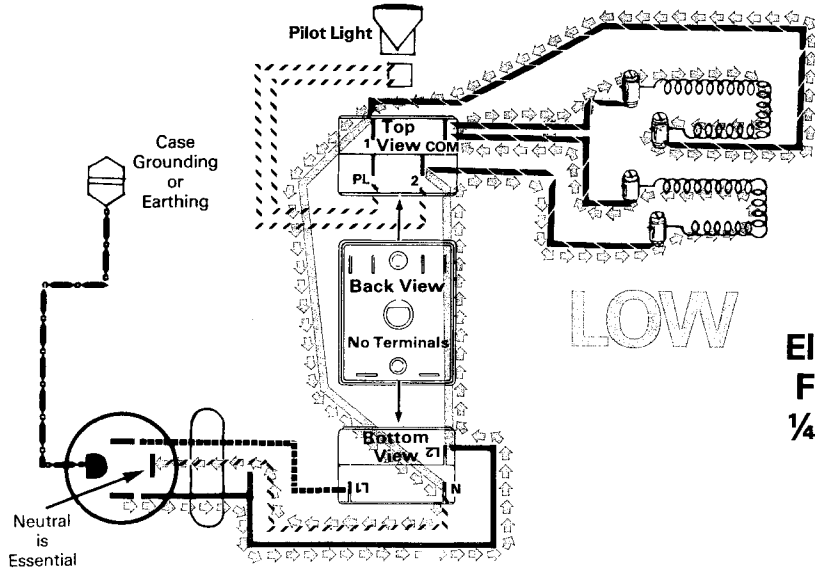
Paragon KILNS

Box 808
Mesquite, Texas 75149 - 0170

CURRENT FLOW THROUGH A 4-WAY ROTARY SWITCH

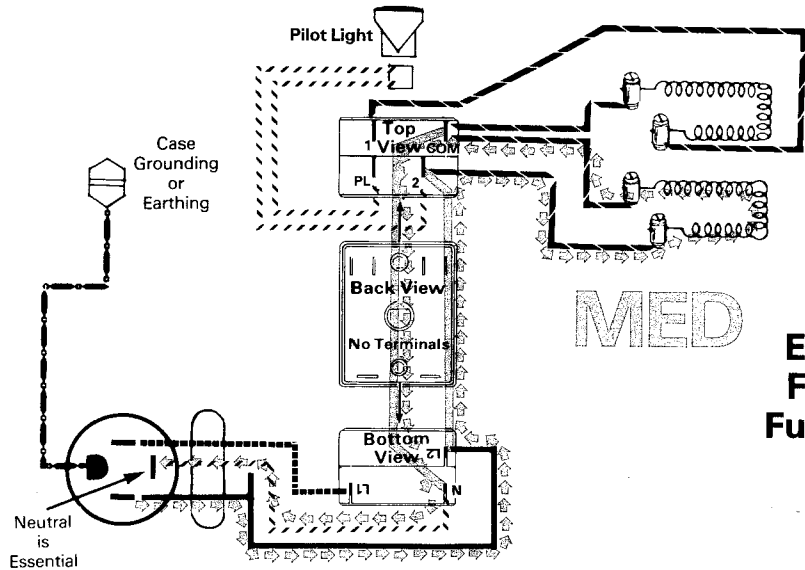
These diagrams show how electric current flows through a 4-way rotary switch (A-21 for push-on terminals) to the elements in each switch position. The current enters the switch from the bottom and leaves through the top.

Understanding how current flows through the switch is very helpful in interpreting ohmmeter readings of the kiln.



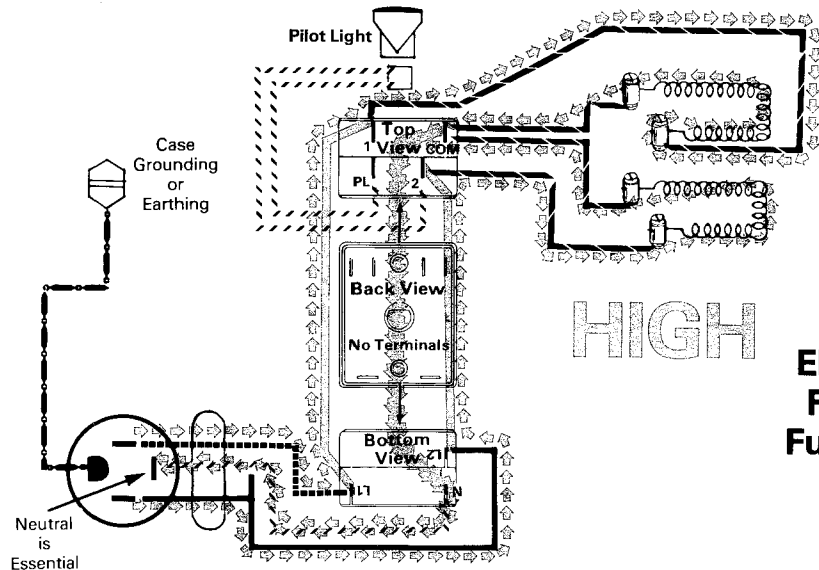
LOW

Two Elements Firing at 1/4 Power



MED

One Element Firing at Full Power



HIGH

Two Elements Firing at Full Power