

WIRE SIZES

NOTE: ALL WIRES TO BE
TYPE SEW/SF2, #14 AWG
MINIMUM UNLESS NOTED

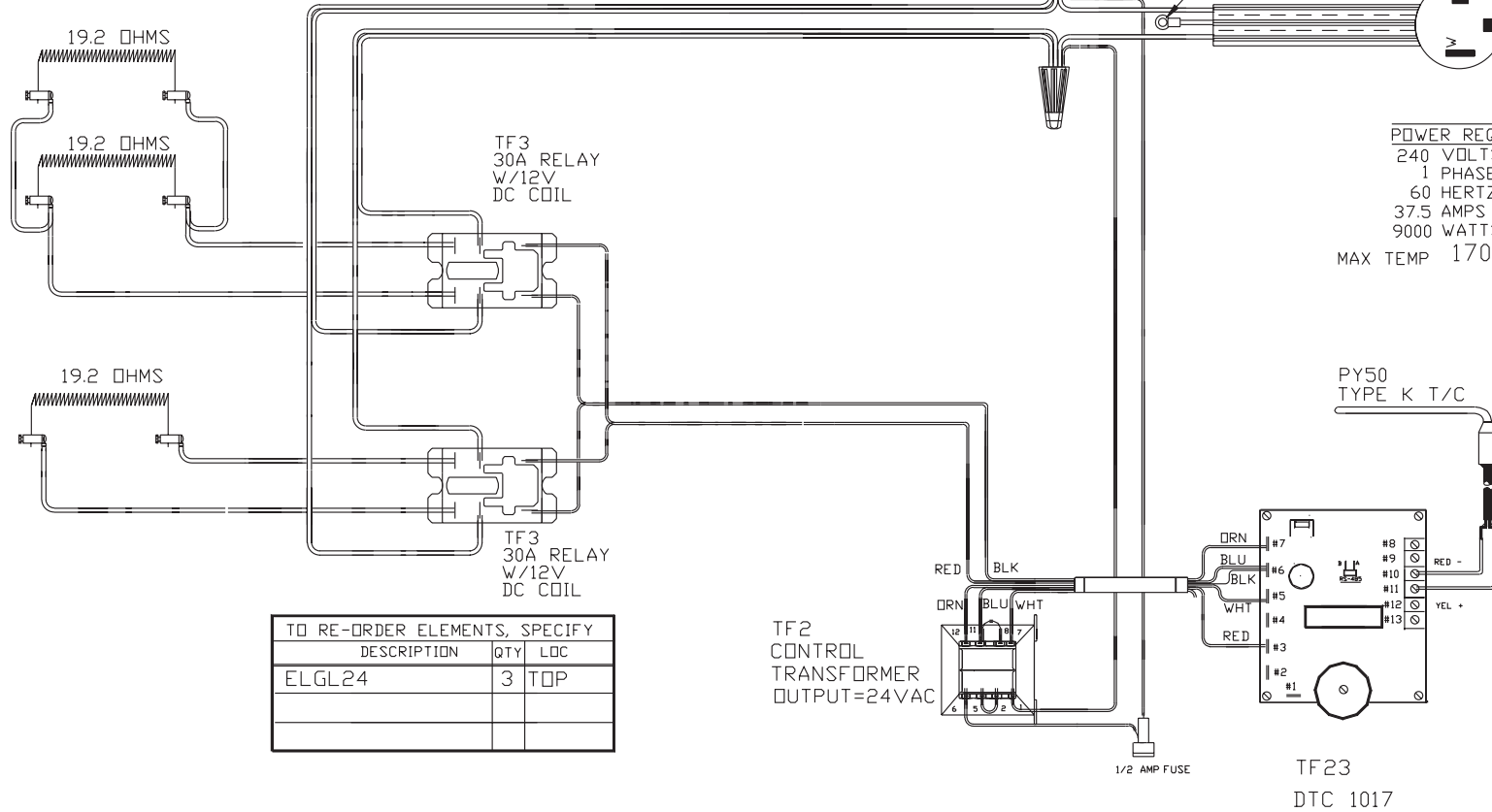
CAUTION!

TO PROVIDE CONTINUED
PROTECTION AGAINST THE
RISK OF ELECTRIC SHOCK
CUSTOMER'S POWER
SUPPLY MUST BE
PROPERLY GROUNDED

CR6
6-2/8-1 CORDSET
6-50P CAP

POWER REQ'TS

240 VOLTS
1 PHASE
60 HERTZ
37.5 AMPS
9000 WATTS
MAX TEMP 1700°F



COMMENTS

PARAGON INDUSTRIES
2011 SOUTH TOWN EAST BLVD
MESQUITE, TEXAS 75149

PRODUCT DESCRIPTION
25"W, 15"H, 23"DP
240V, 1PH. 60HZ, 37.5A, 9000W

PART NO.
GL24AD
WIRING DIAGRAM

REV
-