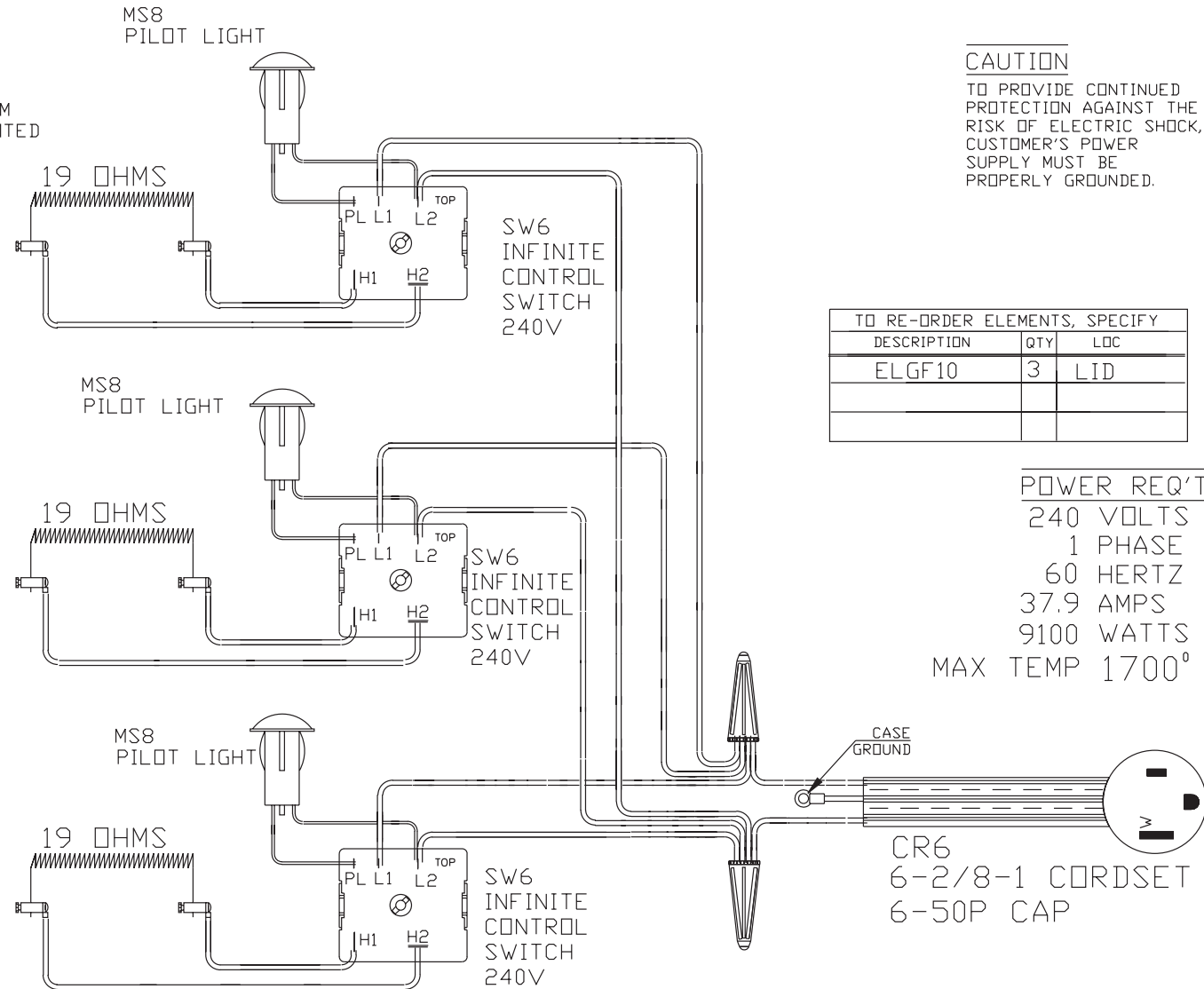


WIRING NOTE

ALL WIRES #14 AWG,  
TYPE SEW/SF2 MINIMUM  
UNLESS OTHERWISE NOTED

CAUTION

TO PROVIDE CONTINUED  
PROTECTION AGAINST THE  
RISK OF ELECTRIC SHOCK,  
CUSTOMER'S POWER  
SUPPLY MUST BE  
PROPERLY GROUNDING.



TO RE-ORDER ELEMENTS, SPECIFY

DESCRIPTION	QTY	LDC
ELGF10	3	LID

POWER REQ'TS

240 VOLTS  
1 PHASE  
60 HERTZ  
37.9 AMPS  
9100 WATTS  
MAX TEMP 1700° F

COMMENTS

PARAGON INDUSTRIES  
2011 SOUTH TOWN EAST BLVD  
MESQUITE, TEXAS 75149

PRODUCT DESCRIPTION  
10 SIDES, 23.5" DIA, 9" DP  
240V, 1PH, 60HZ, 38A, 9100W

PART NO. GF10B  
WIRING DIAGRAM

REV  
-