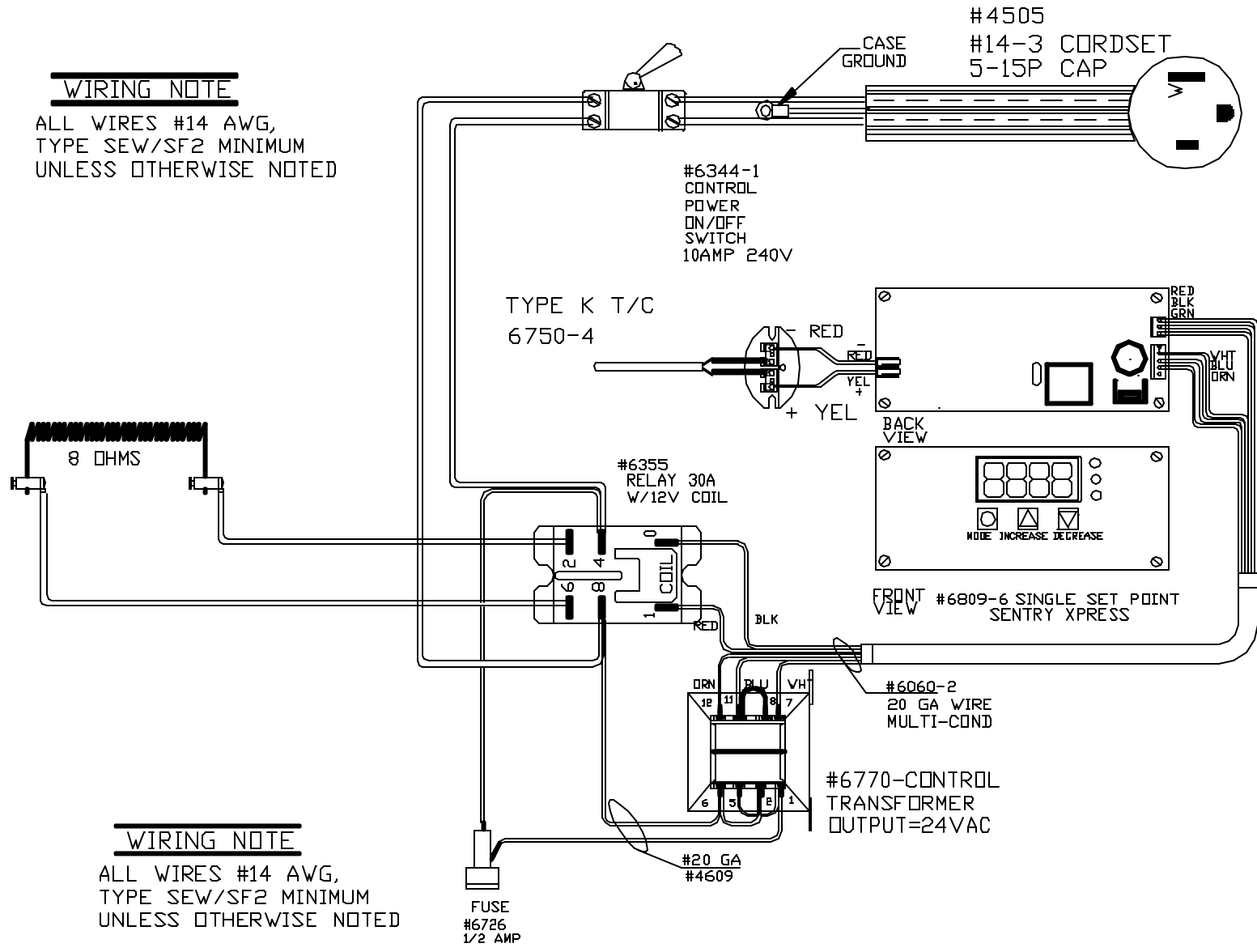


POWER REQ'TS
 120 VOLTS
 1 PHASE
 60 HERTZ
 15 AMPS
 1800 WATTS

WIRING NOTE

ALL WIRES #14 AWG,
 TYPE SEW/SF2 MINIMUM
 UNLESS OTHERWISE NOTED



WIRING NOTE

ALL WIRES #14 AWG,
 TYPE SEW/SF2 MINIMUM
 UNLESS OTHERWISE NOTED

CFG 3
 VER 1A

PAINTED
 STEEL CASE
 1094°C
 2000°F

REV	DATE	BY	DESCRIPTION	SWITCH BOX ASSY- 42033		PART NO	REV
-	8/1/02	DTB		PARAGON INDUSTRIES		HOME120	A
A	3/27/06	DTB	CHG CFG FROM 4 TO 3-NEW BD	2011 SOUTH TOWN EAST BLVD		12DIA X 12DP SSP-PAR	
				MESQUITE, TEXAS 75149			
				WIRING DIAGRAM			
				120V ,1 PHASE ,60HZ 1800 WATTS			